



Your solution partner since 96

WINBOARD

PROTECTION SCREEN



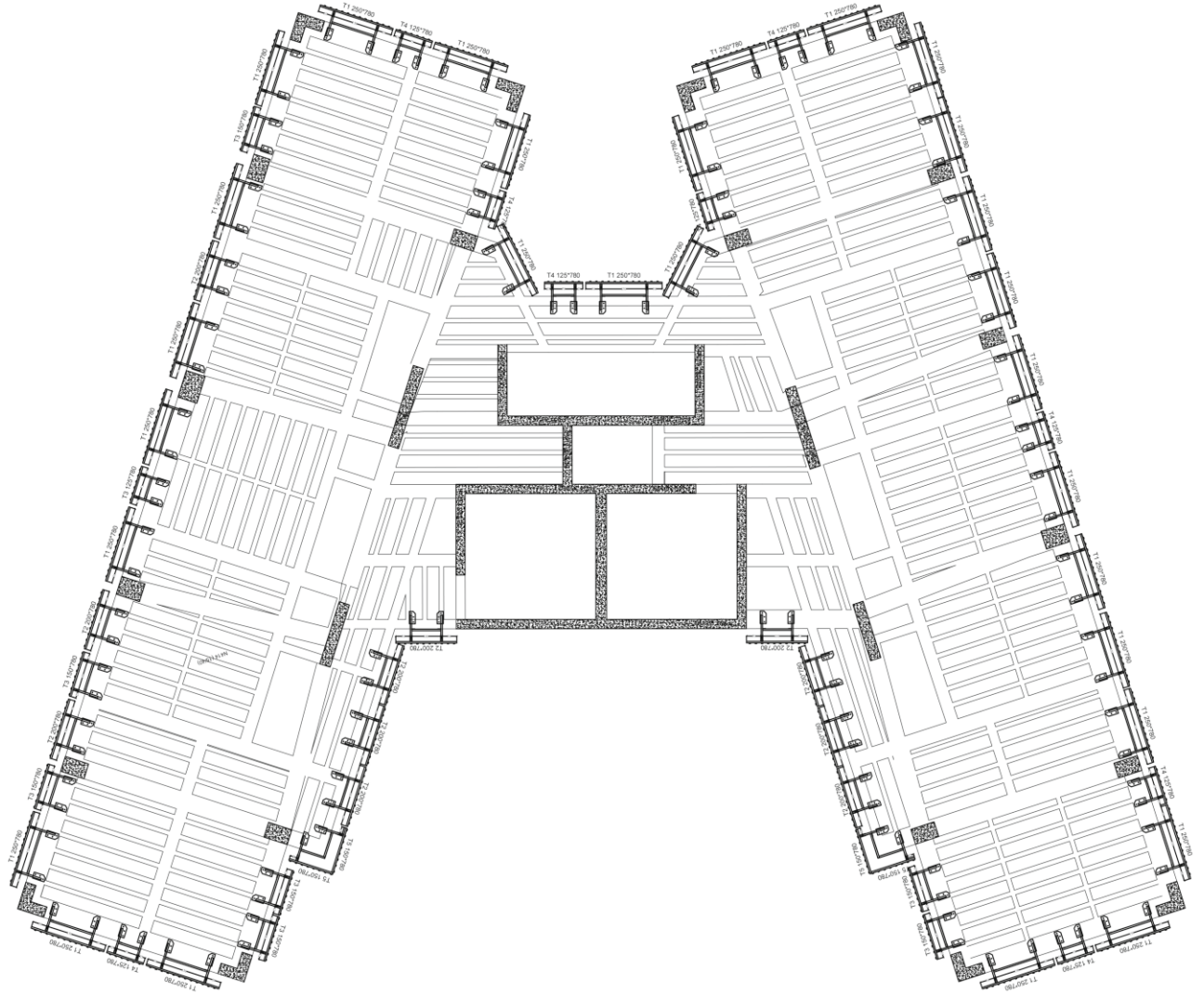
WINBOARD / CEPHE KORUMA PANELİ

Windboard montajı şantiye sahasında yapılan, vinç ile deplase edilen, devam eden inşaat projelerinde beton dökümü veya kalıp kurulması sırasında yaşanılması muhtemel iş kazalarını önlemek için %100 iş güvenliği kuralları dikkate alınarak dizayn edilmiştir. Cephe yüzeyi malzeme düşmesini önleyici çesan ile kaplıdır. Windboard vinç kullanıma gerek kalmadan da hidrolik üniteler ile deplase olma özelliğine sahiptir. Hesaplarımızda TS-498 standardı referans alınmıştır. Bu standarda göre uygulanabilecek rüzgar hızı H=0-8 mt için 28 m/s, H=9-20 mt için 36 m/s, H=21-100 mt için 42 m/s ve H>100 mt için 46 m/s dir. Windboard panel hesapları 46 m/s rüzgar yüküne göre yapılmaktadır. Windboard TSE belgeli, mekanik testlere tabi tutulmuş sanayi profillerinden üretilir. Ürünler boya işleme tabi tutulmadan önce kumlama yapılarak yüzeyindeki kimyasal yağlardan arındırılır.

WINBOARD / PROTECTION PANEL

WINBOARD is designed in accordance with %100 safety rules to avoid work accident in ongoing construction projects. Installation is done at the construction site and moved by crane. The surface is covered with steel fence. WINBOARD can be raised with hydraulic items without using crane. TS-498 standard is used as reference in our calculations. Wind speed applicable to this standard is 28 m/s for H = 0-8 mt, 36 m/s for H = 9-20 mt, 42 m/s for H = 21-100 mt and 46 m/s for H = 100 mt and over than 100 mt. WINBOARD panel calculations are done in accordance with 46 m/s wind load. WINBOARD is produced from TSE-certified, mechanically tested industrial profiles. Robotic cutting, drilling and welding processes are applied in our production. The steel products are cleaned with sandblasting before oven painting because of the industrial chemical oil. Upon request, our products can be hot dip galvanized according to TS 914 EN ISO 1461 standards.

WINBOARD PROTECTION SCREEN

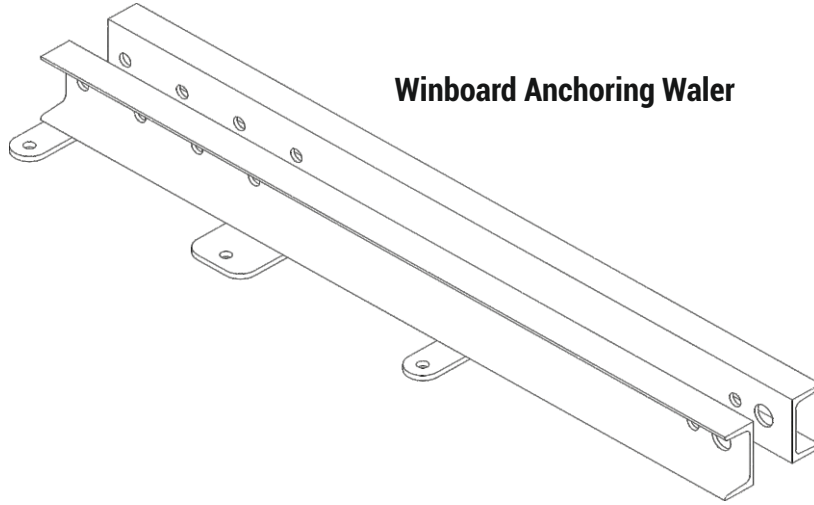


Winboard Protection Panel CAD Plan



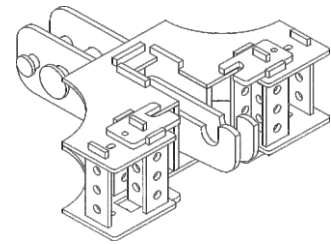
Winboard Protection Application

Economic, Safely, Easily and Fastly Solution

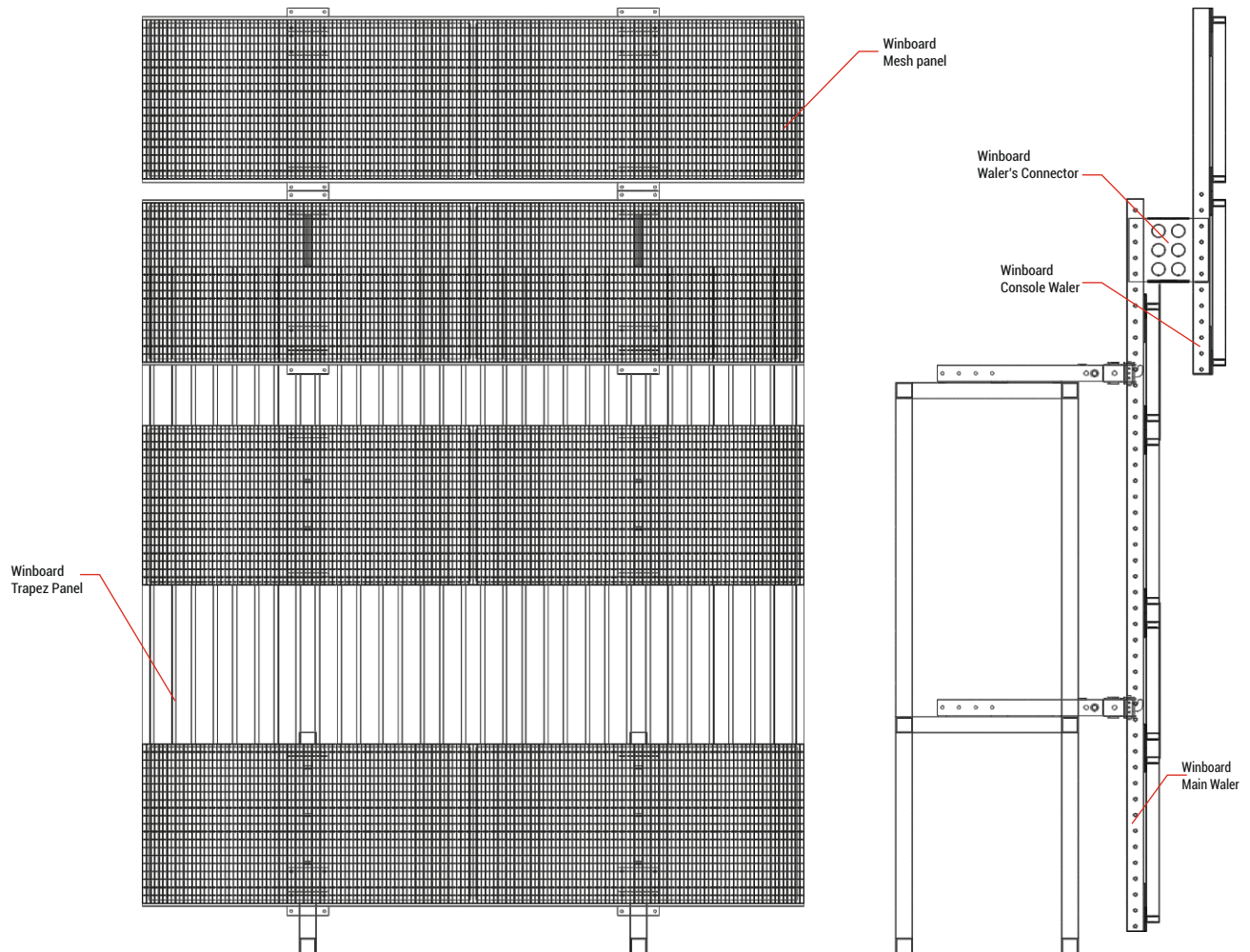


Winboard Anchoring Waler

Winboard Articulated Head

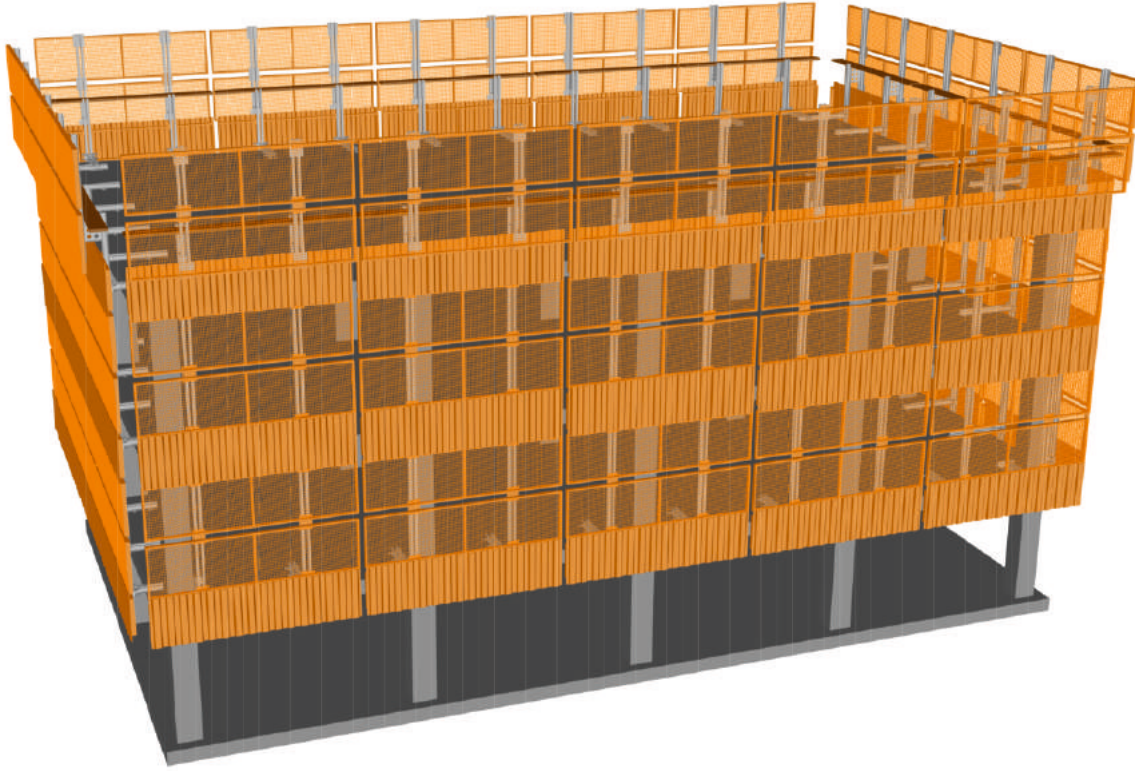


System's desing according by your projects

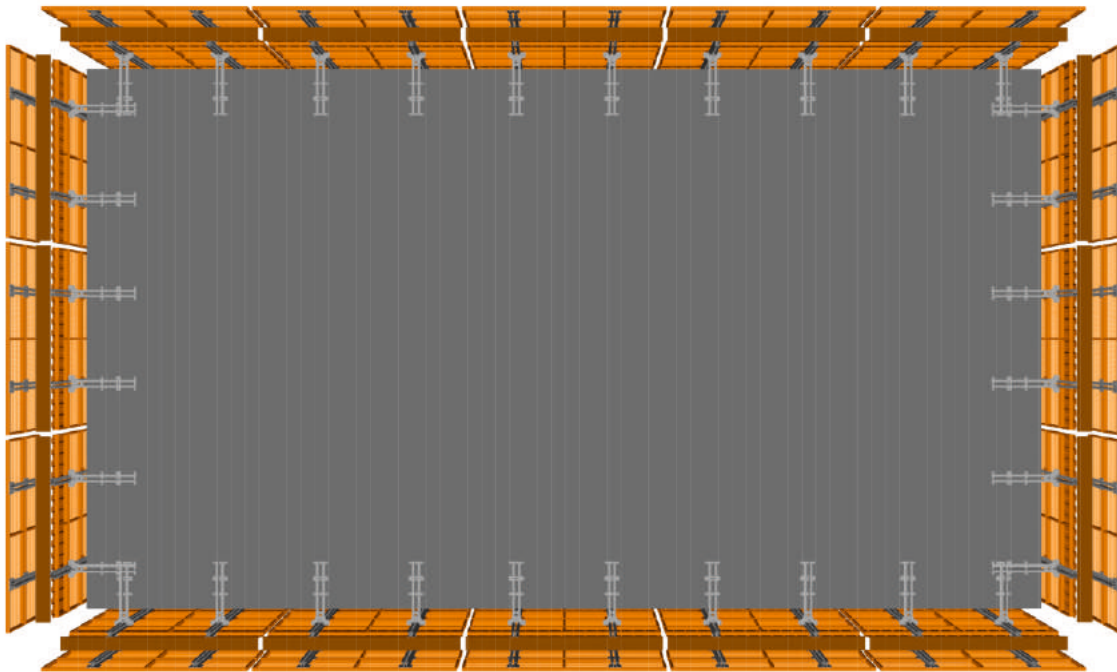


Winboard Protection Panel Typical Section

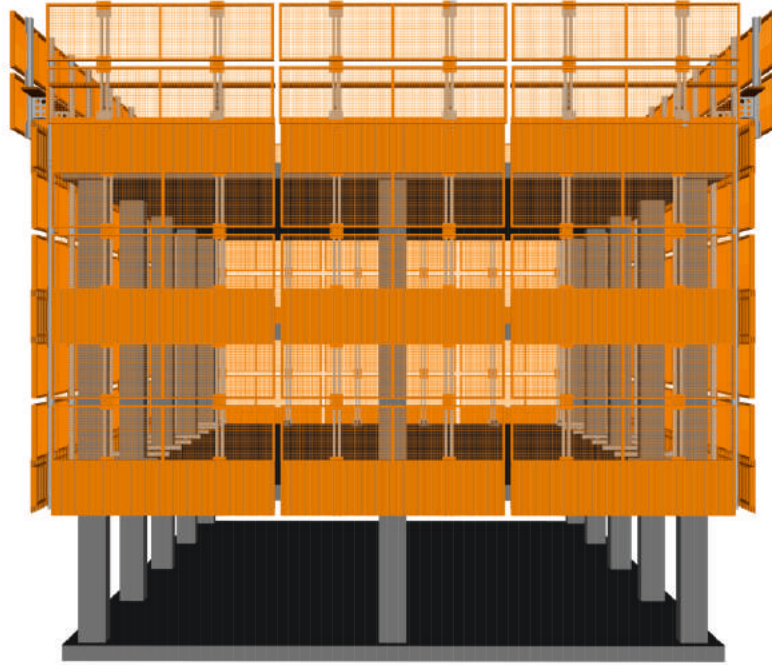
WINBOARD PROTECTION SCREEN



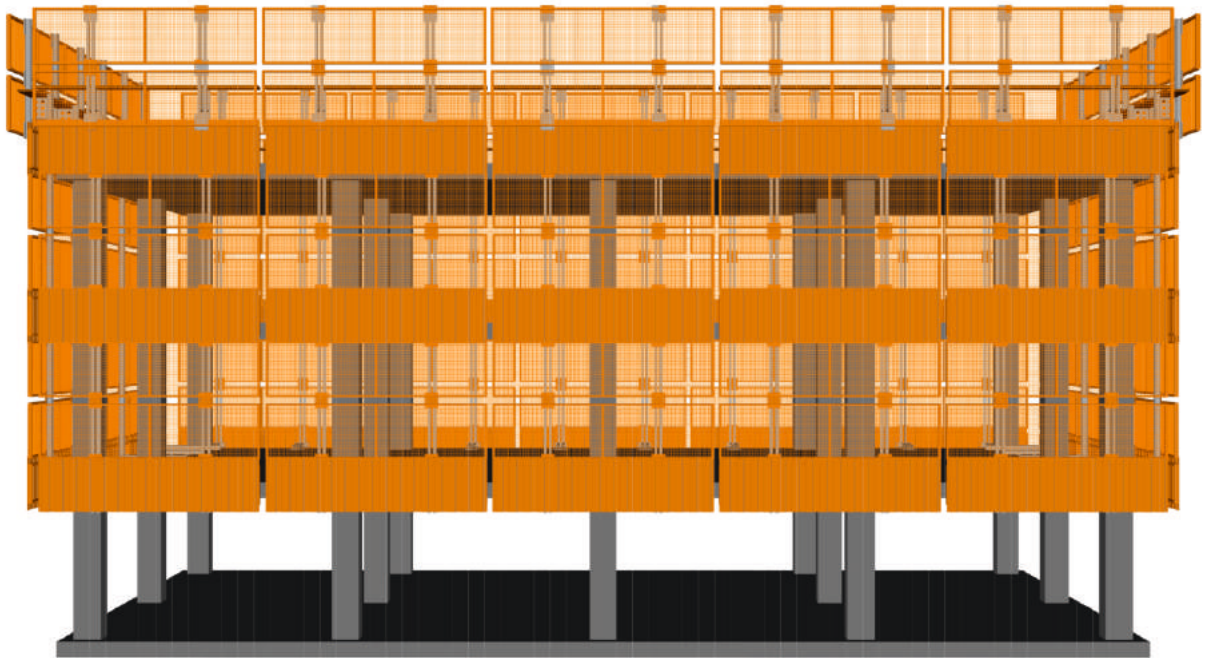
Winboard Protection Panel Perspective View



Winboard Protection Panel Top View



Winboard Protection Panel Side View



Winboard Protection Panel Front View

“The Future
is Ours”



FORMWORK and SCAFFOLDING

Your solution partner since 96

HEADQUARTERS - DİLOVASI

Address : Dilovası Mermerciler Sanayi Sitesi 3. Cd. No:40 Köseler Köyü
Dilovası / KOCAELİ / TÜRKİYE

Phone : +90 262 742 06 37
Fax : +90 262 742 08 37
Web : ozleriskele.com
E-mail : info@ozleriskele.com - fabrika@ozleriskele.com

EGE BRANCH

Address : Kavaklıdere Mah. Ankara Cd. No:405/1
Bornova / İZMİR

Phone : +90 232 479 01 37
Responsible Person : Erdi AYHAN
E-mail : erdi.ayhan@ozleriskele.com