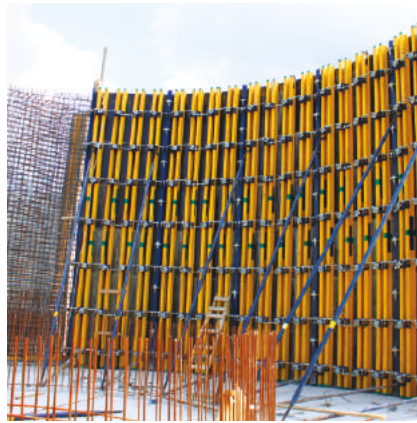




Your solution partner since 96

TIMBERFORM

CIRCULAR FORMWORK



TIMBERFORM - C / AHŞAP KİRİŞLİ DAİRESEL PERDE KALIBI SİSTEMİ

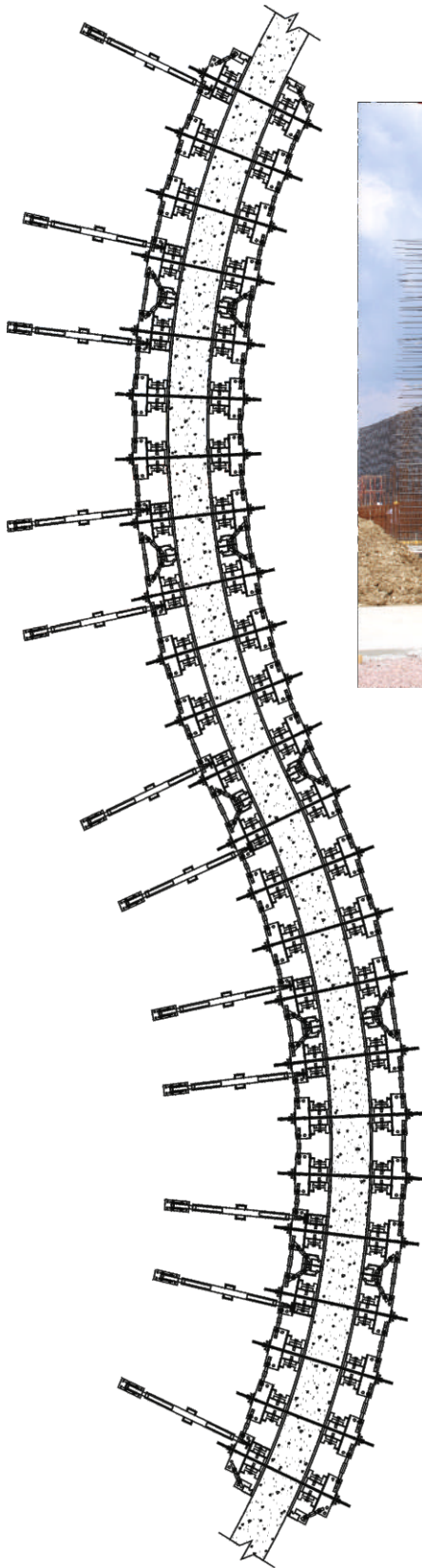
Timberform-C vinç ile taşınan dikeyde H20 ahşap kirişler yatayda özel tasarım çelik perde kuşakları ve yüzeyinde plywood kaplı geniş yüzeyli perde kalıbı sistemidir. Sistemin dikey yönünde kullanılan H20 ahşap kirişler EN 13377 standartlarına göre üretilmiştir. Sistem H20 ahşap kirişlerin tek ya da eklenerek kullanılması halinde her türlü yüksekliğe göre ayarlanabilir. Gergi aparatları ile panolara eğrisel form verilerek aynı proje içinde farklı çaplar kolayca ayarlanır ve sonraki projelere de kolayca uyum sağlar. Tasarımlarımızda maksimum 50 kN/m2 taze beton basıncı dikkate alınır. Üretimlerimizde robotik kesme, delme ve kaynak prosesi uygulanmaktadır. Çelik ürünler fırın boya işlemine tabi tutulmadan önce kumlama yapılarak yüzeyindeki kimyasal yağlardan arındırılır. Ayrıca talep halinde ürünlerimiz TS 914 EN ISO 1461 standartlarına göre daldırma galvaniz kaplanabilir.

TIMBERFORM-C / CIRCULAR WALL FORMWORK SYSTEM

TIMBERFORM-C is large area circular wall formwork system carried by Crane which is set with vertical H20 wooden beams, horizontal special steel waler and plywood surface. H20 wooden beams are used in the vertical direction of the system are produced according to EN 13377 standards. The system can be adjusted to any height if the H20 wooden beams are used individually or added together. With the adjustable parts (DP Tension Component) panels can have a curved form and different diameters can be easily adjusted in the same project and can be easily adapted to the following projects. Maximum 50 kN/m2 fresh concrete pressure is taken into consideration in our designs. Robotic cutting, drilling and welding processes are applied in our production. The steel products are cleaned with sandblasting before oven painting because of the industrial chemical oil. Upon request, our products can be hot dip galvanized according to TS 914 EN ISO 1461 standards.

TIMBERFORM

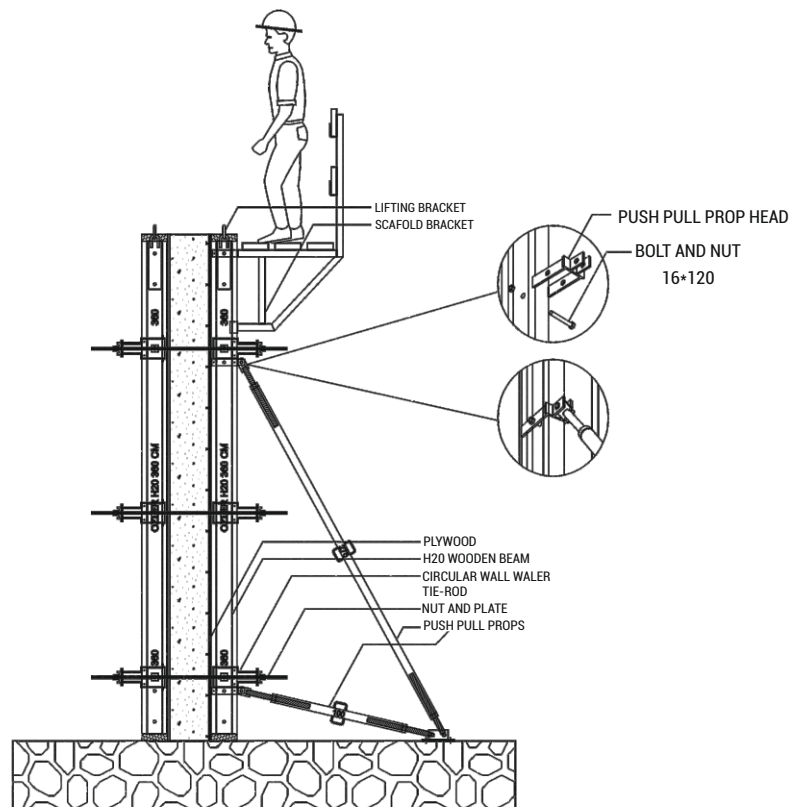
CIRCULAR FORMWORK



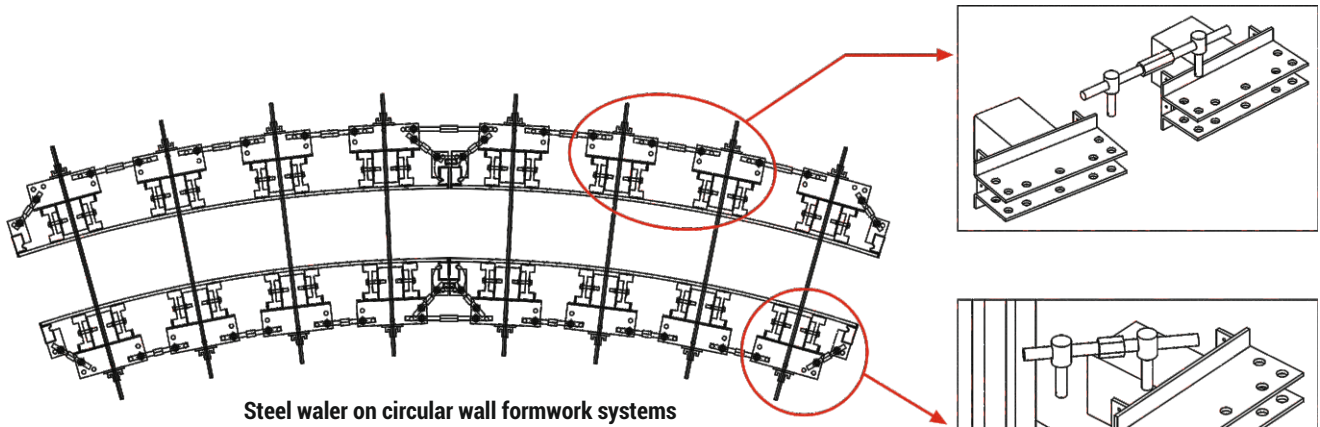
Circular wall formwork
CAD plan



Circular wall formwork wooden beam system's application

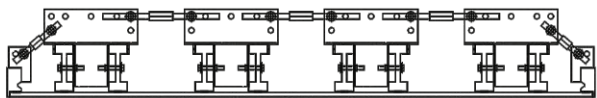
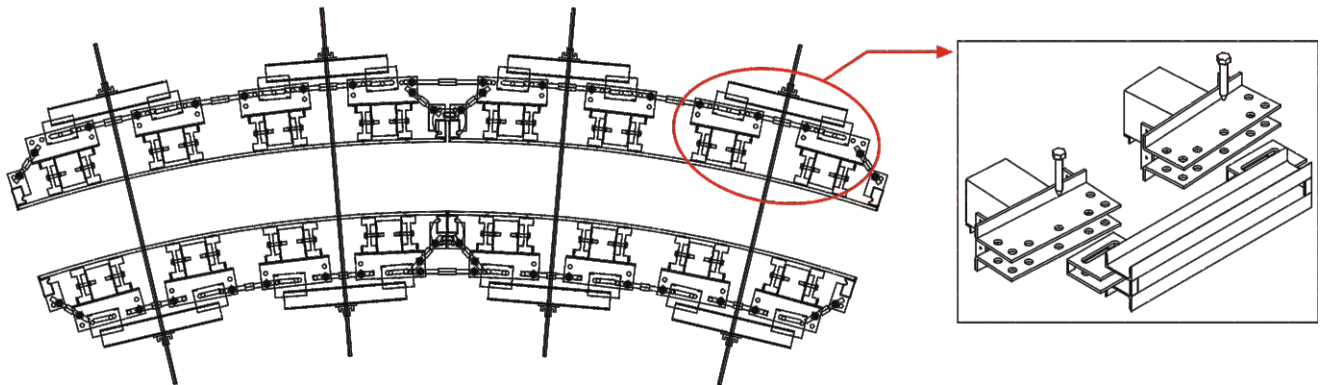


Circular wall formwork typical
section

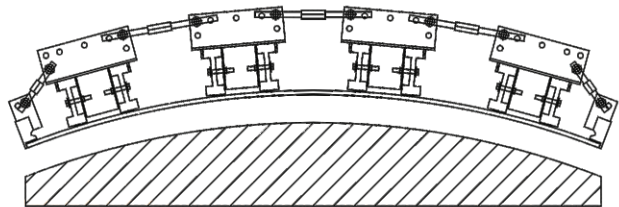


Steel waler on circular wall formwork systems

This system can use, especially when building such as water tank, in case of less tie-rod holes required and single sided circular Wall formwork system, for the vertical steel waler connection



Before to give curvilinearity on the circular wall formwork panel

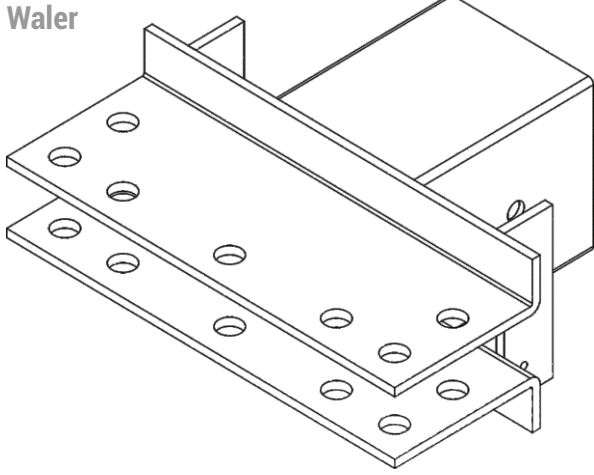
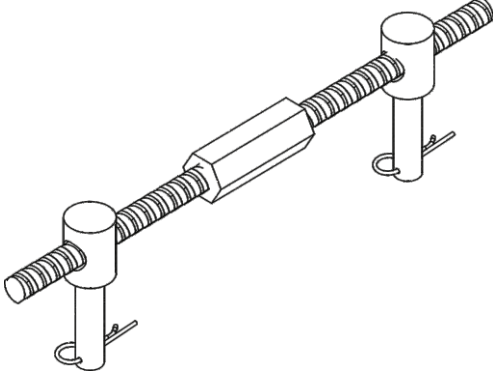
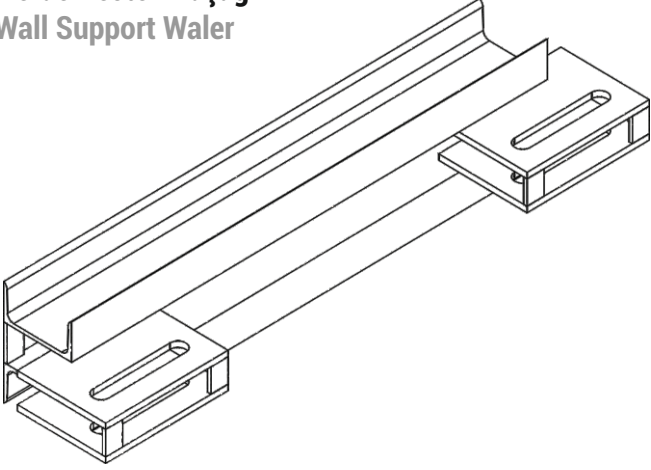



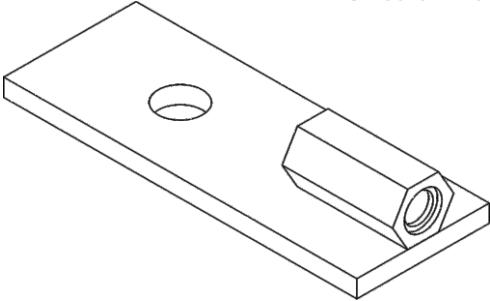
Application of demanded curve on the circular wall formwork panel with wooden and metal template



TIMBERFORM

CIRCULAR FORMWORK

	AĞIRLIK KG WEIGHT KG	UZUNLUĞU LENGHT	ÜRÜN KODU CODE
Dairesel Perde Kuşağı Circular Wall Waler 	12,25 14,75	30 40	100701 100702
Dairesel Perde Gergi Aparatı Circular Wall Tesion Component 	2,50 4,50	25 50	100706 100707
Dairesel Perde Destek Kuşağı Circular Wall Support Waler 	21,40		100703

AĞIRLIK KG WEIGHT KG	UZUNLUĞU LENGHT	ÜRÜN KODU CODE	
15,50 15,50		100704 (Sağ) 100705 (Sol)	 <p>Dairesel Perde Dış Köşe Elemanı Circular Wall Edge Component</p>
2,25		100708	 <p>Dairesel Perde Alın Bağlama Elemanı Circular Wall Stopend</p>

“The Future
is Ours”



FORMWORK and SCAFFOLDING

Your solution partner since 96

HEADQUARTERS - DİLOVASI

Address : Dilovası Mermerciler Sanayi Sitesi 3. Cd. No:40 Köseler Köyü
Dilovası / KOCAELİ / TÜRKİYE

Phone : +90 262 742 06 37
Fax : +90 262 742 08 37
Web : ozleriskele.com
E-mail : info@ozleriskele.com - fabrika@ozleriskele.com

EGE BRANCH

Address : Kavaklıdere Mah. Ankara Cd. No:405/1
Bornova / İZMİR

Phone : +90 232 479 01 37
Responsible Person : Erdi AYHAN
E-mail : erdi.ayhan@ozleriskele.com