



Your solution partner since 96

RAPIDO

PANEL FORMWORK



RAPIDO / PANEL KALIP SİSTEMİ

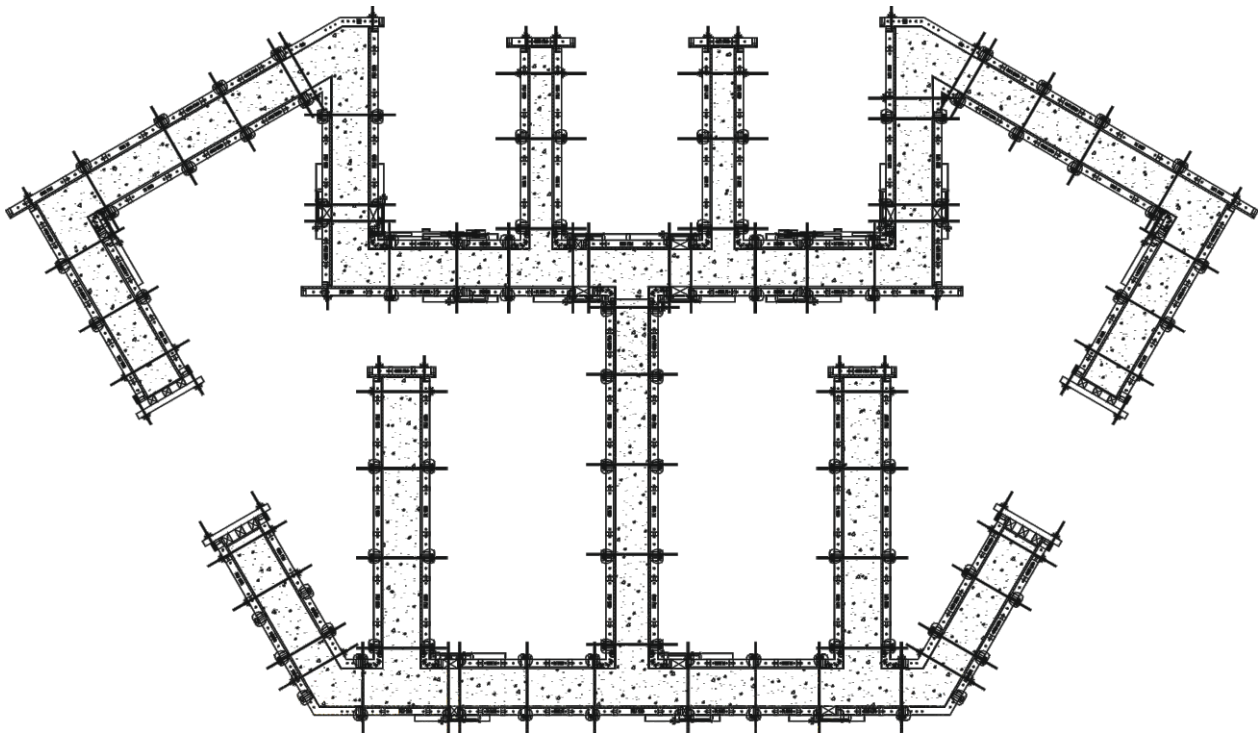
Rapido vinç ile taşınan, çelik çerçeveli, plywood yüzeyli panel kalıp sistemidir. Sistemin ana çerçevesinde Welsler profil tarafından dizayn edilmiş burulmaya karşı mukavemet değeri yüksek özel şekillendirilmiş S355 MC çelik profil kullanılmaktadır. Panel yüzeylerinde 21 mm birch plywood kullanılmaktadır. Panel genişlikleri, 30-45-60-75-90-105-120-240 ve yükseklikleri ise, 60-90-120-150-180-210-240-270-300-330 cm olarak üretilmektedir. Rapido-uni panellerde kullanılan 5 cm de bir delinmiş perfore profiller sayesinde her ebat perde ve kolon kalıbı kolayca ayarlanıp dökülebilir. Rapido kalıp sistemi maksimum 80 kN/m² taze beton basıncına göre dizayn edilmiştir. Üretimlerimizde robotik kesme, delme ve kaynak prosesi uygulanmaktadır. Paneller fırın boya işlemine tabi tutulmadan önce kumlama yapılarak yüzeyindeki kimyasal yağlardan arındırılır. Ayrıca talep halinde ürünlerimiz TS 914 EN ISO 1461 standartlarına göre daldırma galvaniz kaplanabilir.

RAPIDO / PANEL FORMWORK SYSTEM

RAPIDO is a steel frame, plywood surfaced panel formwork system carried by crane. In the main frame of the system, specially shaped S355 MC steel profile with high buckling resistance value designed by Welsler profile is used. 21 mm birch plywood is used for panel surfaces. Panel widths are 30-45-60-75-90-105-120-240 and heights are produced as 60-90-120-150-180-210-240-270-300-330 cm. With 5 cm perforated profiles used in RAPIDO-UNI panels, wall and column formwork of any size can be easily adjusted and casted. RAPIDO formwork system is designed in accordance with maximum 80 kN/m² concrete pressure. Robotic cutting, drilling and welding processes are applied in our production. The steel products are cleaned with sandblasting before oven painting because of the industrial chemical oil. Upon request, our products can be hot dip galvanized according to TS 914 EN ISO 1461 standards.

RAPIDO

PANEL FORMWORK

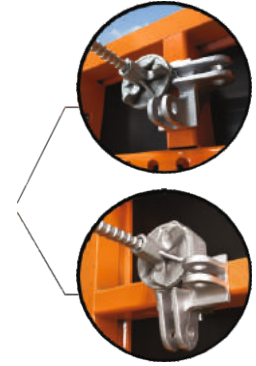
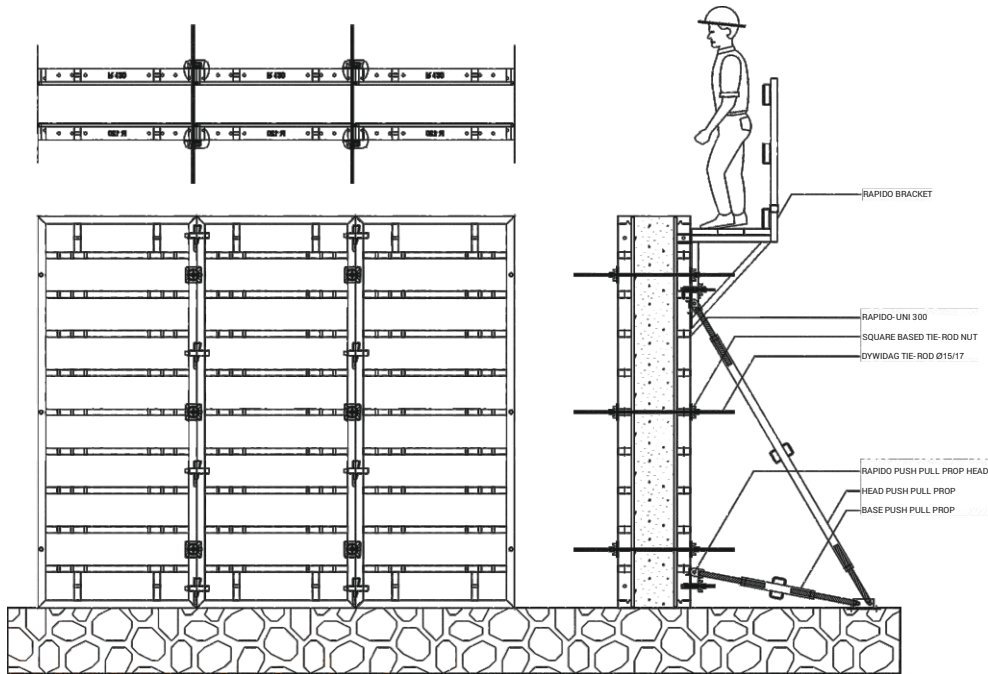


Rapido panel wall formwork CAD plan



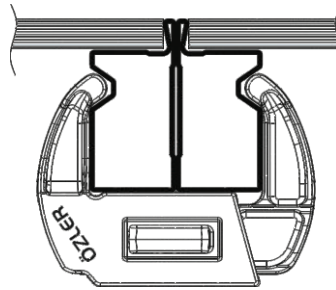
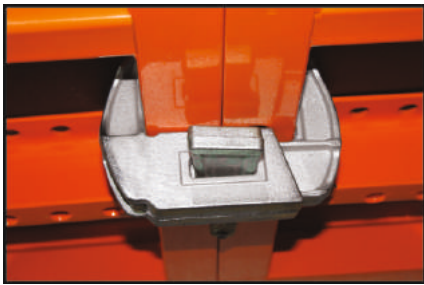
Rapido panel wall formwork application

Rapido panel wall formwork system provides easy molding for different geometrical walls.

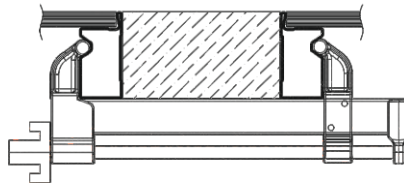
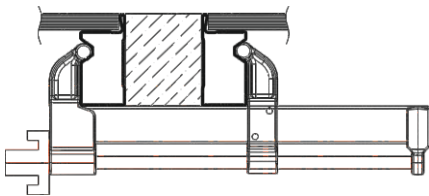


Rapido push pull prop head can be used both horizontal and vertical profile.

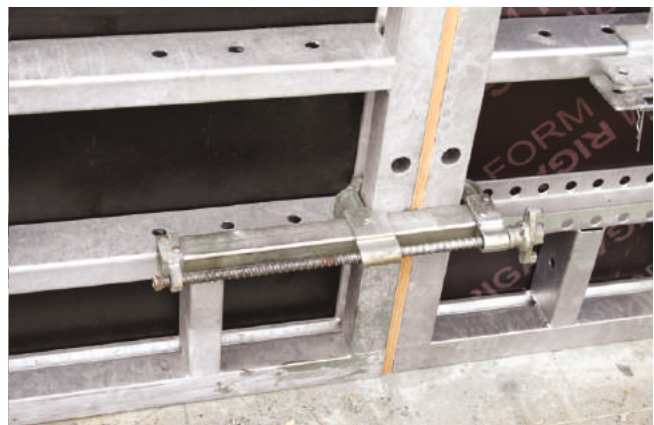
Rapido wall formwork typical plan, appearance and section.



Rapido Lock-Standard has to produce as a appropriate rapido profile geometrics. It provides connection in a right way between panels. With this way all the panels can be aligned.

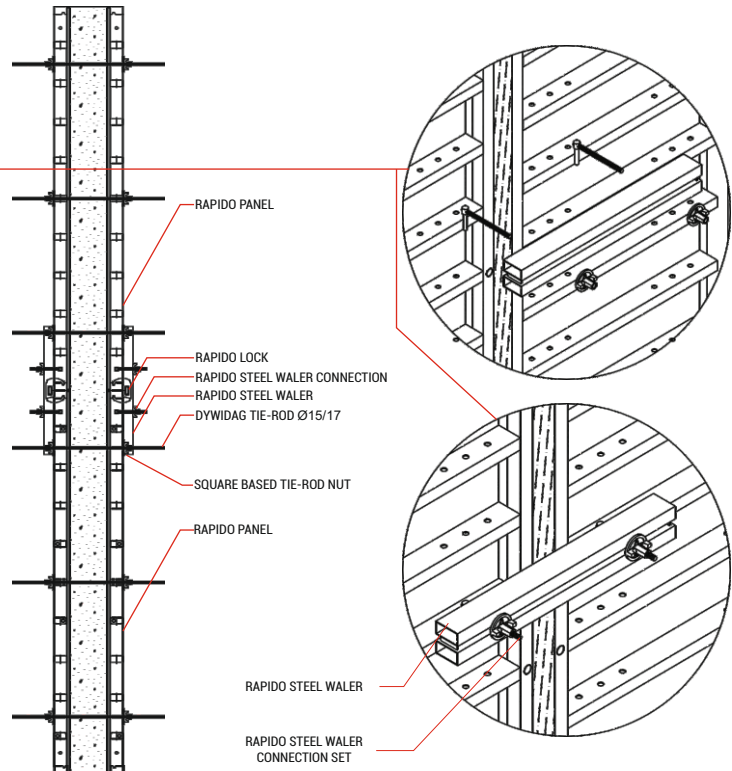
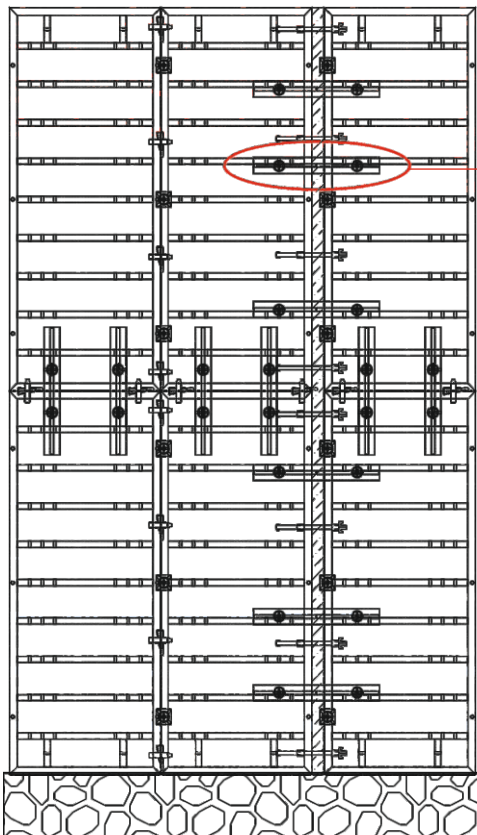
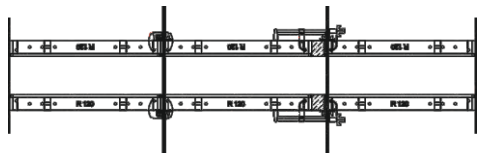


Rapido adjustable lock system can achieve maximum 20 cm casting measure



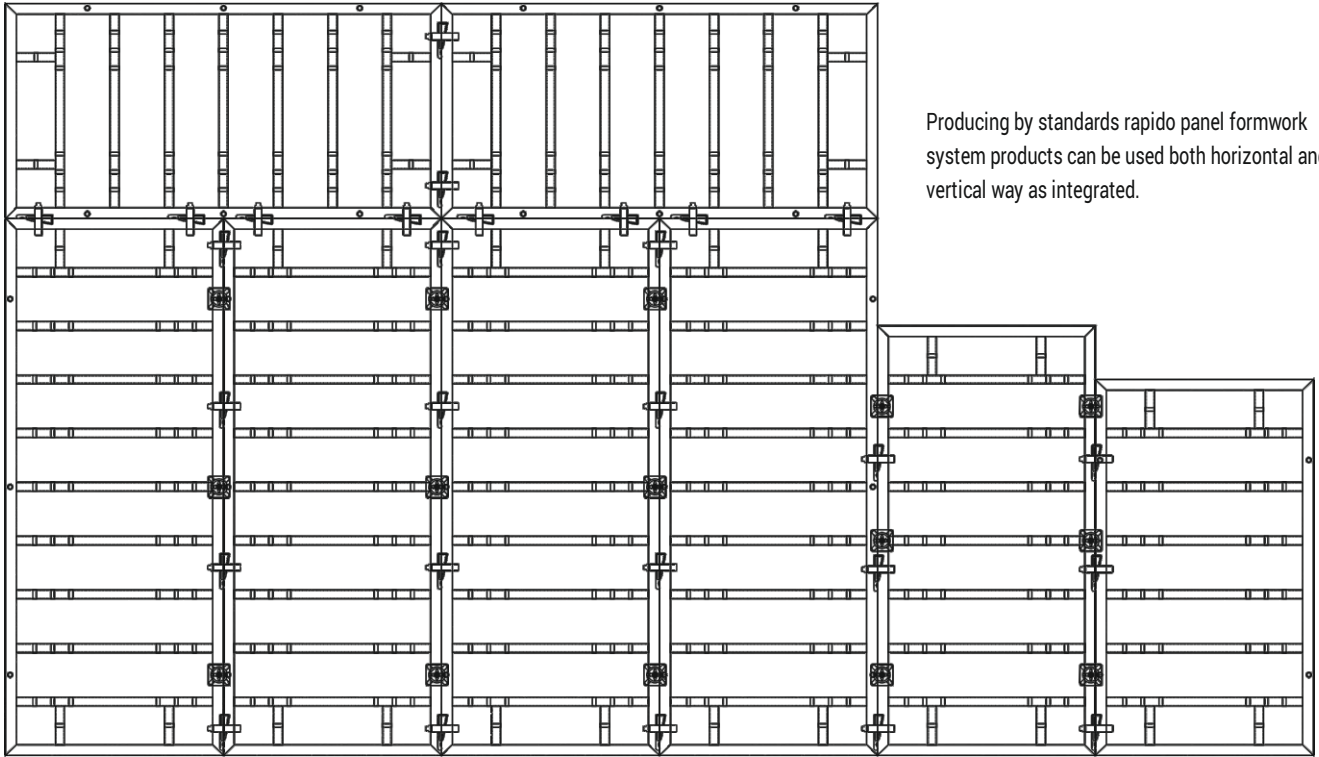
RAPIDO

PANEL FORMWORK



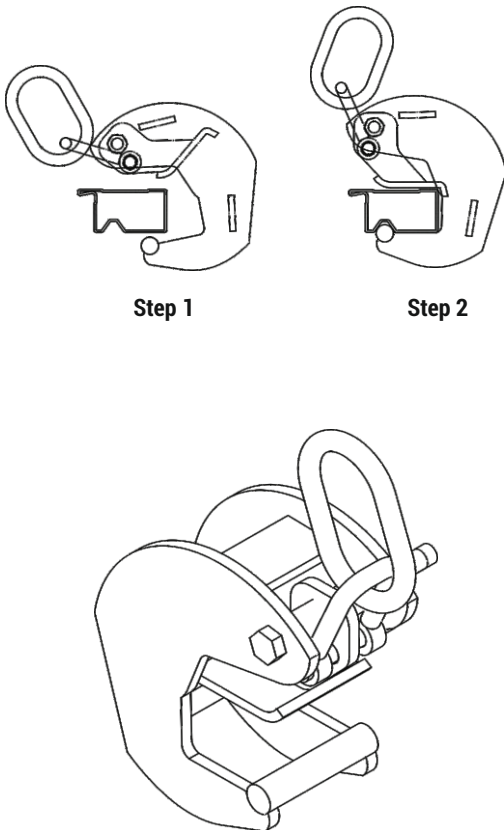
Casting between two panels by using rapido steel waler,aling all the panels on the same line

Rapido wall formwork typical plan, appearance and section



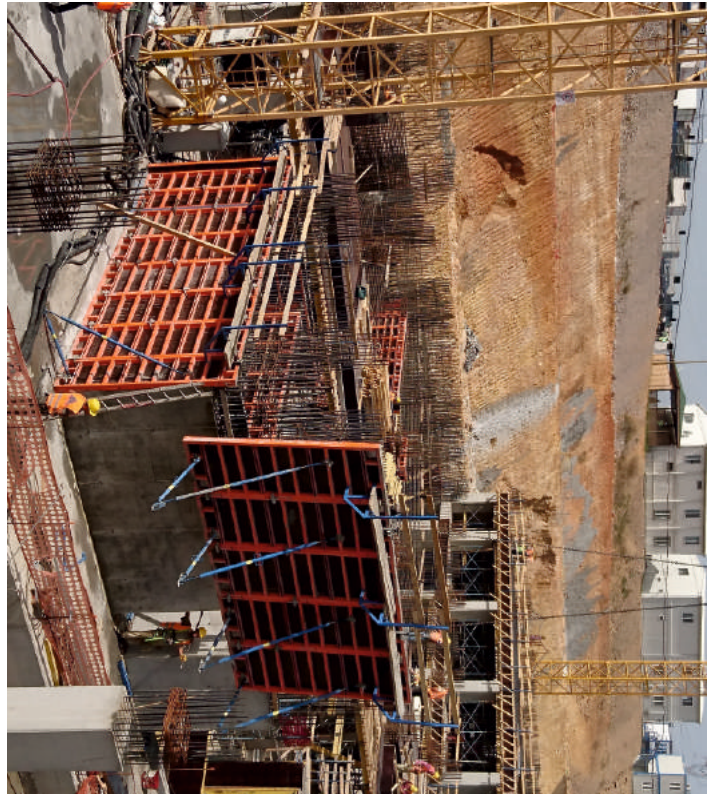
Producing by standards rapido panel formwork system products can be used both horizontal and vertical way as integrated.

Connection details of Rapido lifting bracket



Step 1

Step 2

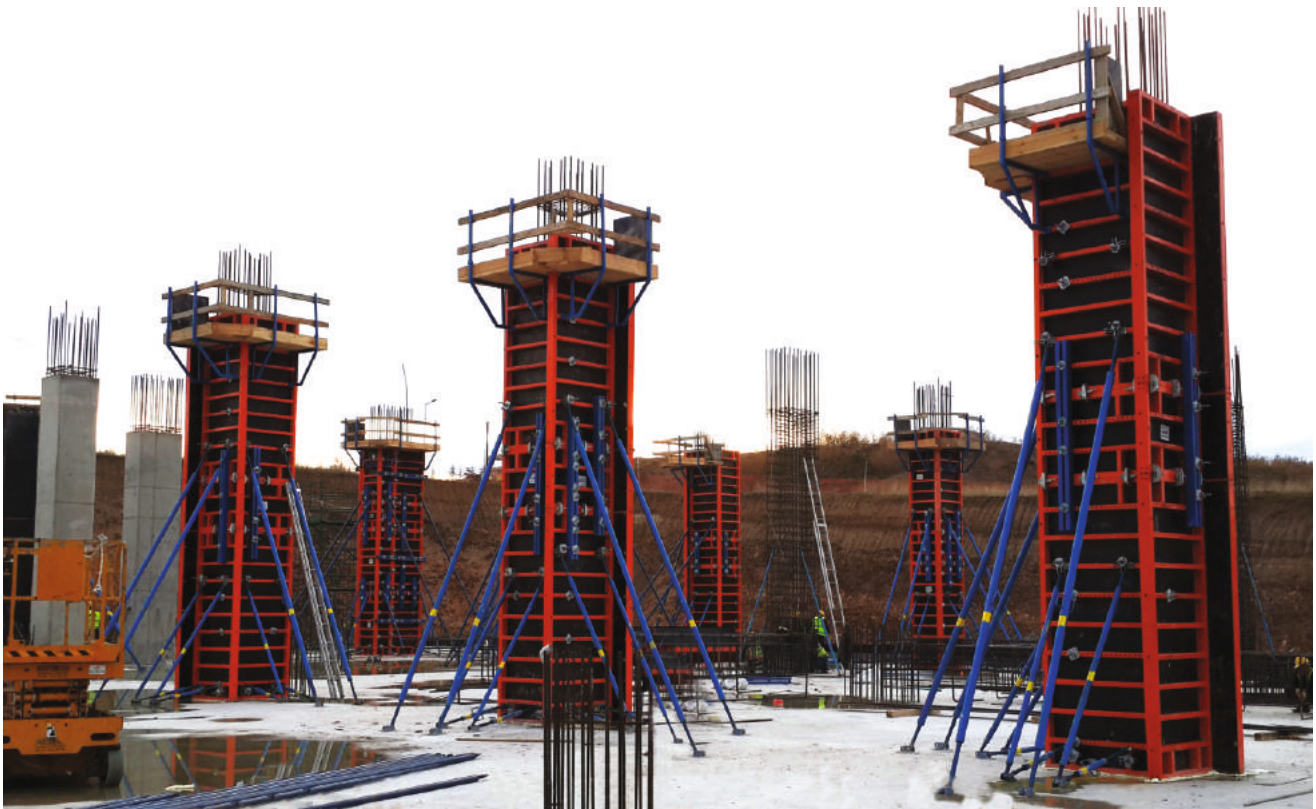


Sample of technical details

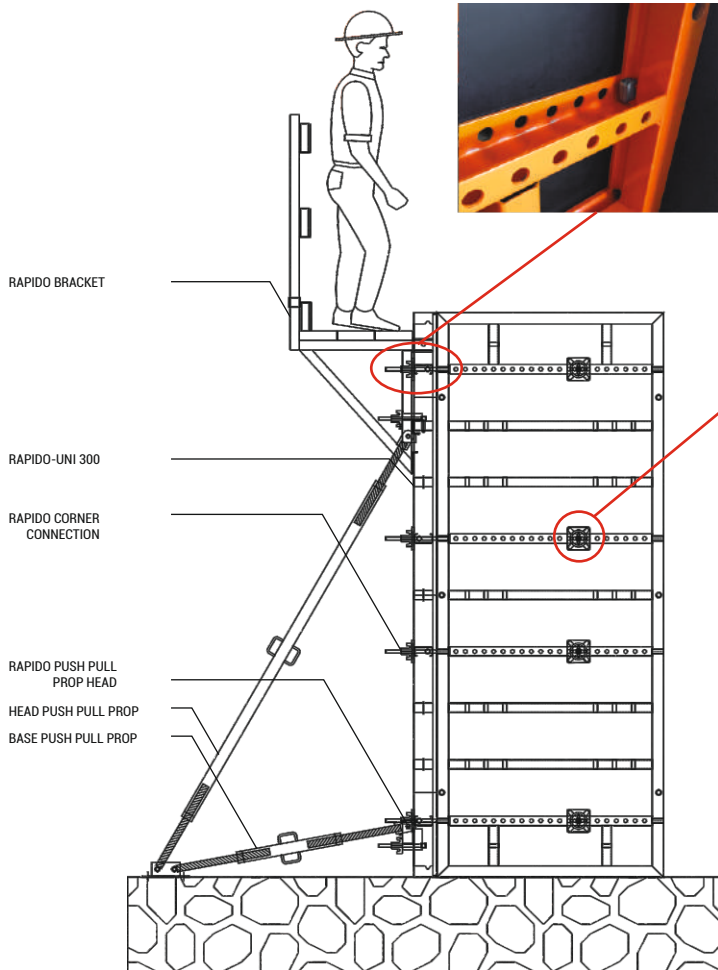
Rapido lifting bracketed can be moved by holding panel's horizontal and vertical equipments as a rigid way due it's specially desing.

RAPIDO

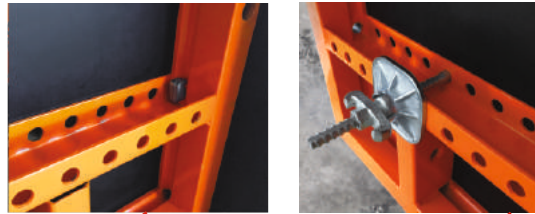
PANEL FORMWORK



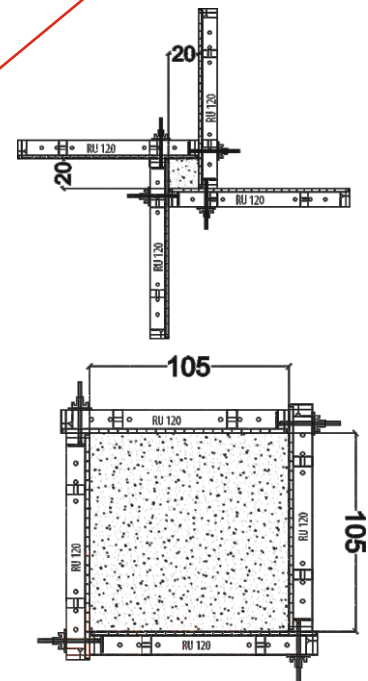
Rapido-Uni column formwork application



Rapido-Uni column formwork typical appearance



Column formworks can be made between 5cm spaces due to holes on the Rapido-Uni column panels.

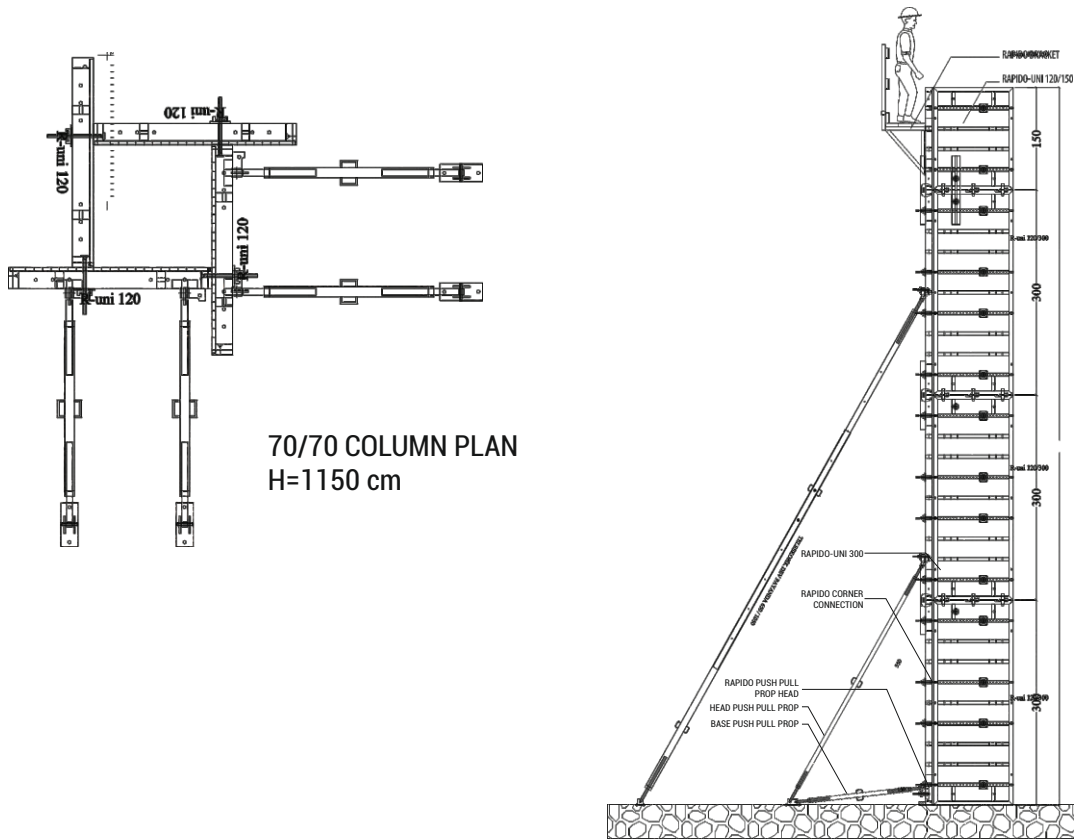


Column formwork can be made min 20/20 max 105/105 sizes by using Rapido-Uni 120



Sample of application details

RAPIDO PANEL FORMWORK

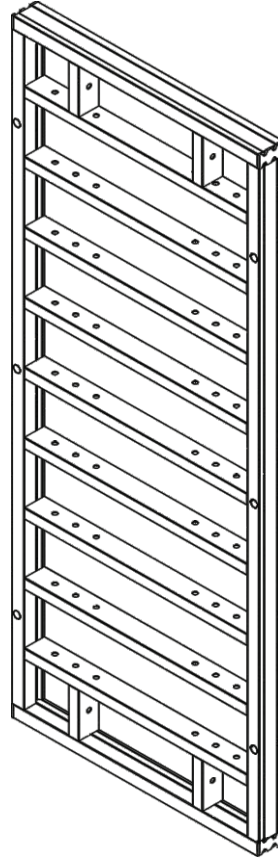


Rapido wall formwork typical plan, appearance and section

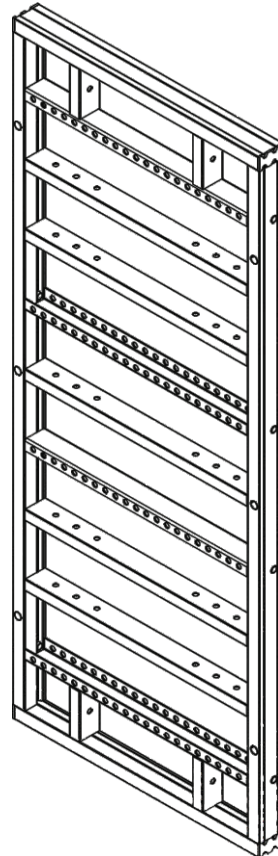


Sample of application details

AĞIRLIK KG WEIGHT KG	UZUNLUĞU LENGHT	ÜRÜN KODU CODE
19,30	030*060	200101
42,40	030*150	200104
73,20	030*270	200108
80,90	030*300	200109
88,60	030*330	200110
27,15	045*060	200201
55,20	045*150	200204
92,80	045*270	200208
102,20	045*300	200209
11,55	045*330	200210
32,05	060*60	200301
65,20	060*150	200304
109,45	060*270	200308
120,50	060*300	200309
131,60	060*330	200310
44,80	090*060	200401
88,05	090*150	200404
145,70	090*270	200408
160,15	090*300	200409
174,55	090*330	200410
54,60	120*060	200501
107,95	120*150	200504
179,05	120*270	200508
196,80	120*300	200509
214,60	120*330	200510
27,15	045*060	200601
55,20	045*150	200604
92,80	045*270	200608
102,20	045*300	200609
111,55	045*330	200610
32,05	060*060	200701
65,20	060*150	200704
109,45	060*270	200708
120,50	060*300	200709
131,60	060*330	200710
44,80	090*060	200801
88,05	090*150	200804
145,70	090*270	200808
160,15	090*300	200809
174,55	090*330	200810
54,60	120*060	200901
107,95	120*150	200904
179,055	120*270	200908
196,80	120*300	200909
214,60	120*330	200910



Rapido Panel
Rapido Panel

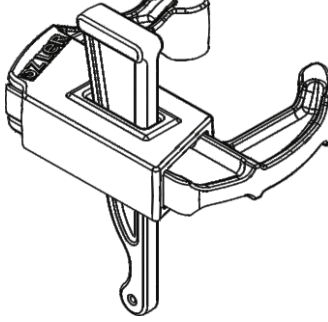
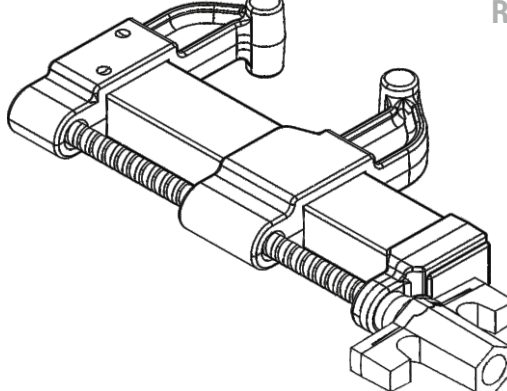
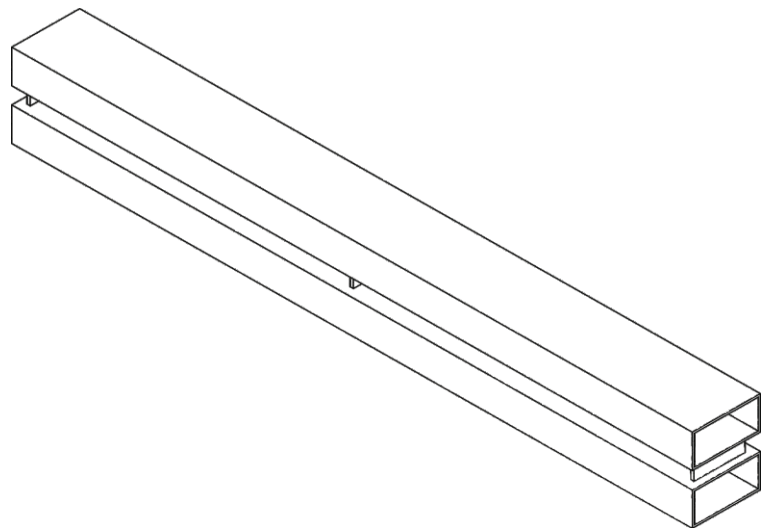


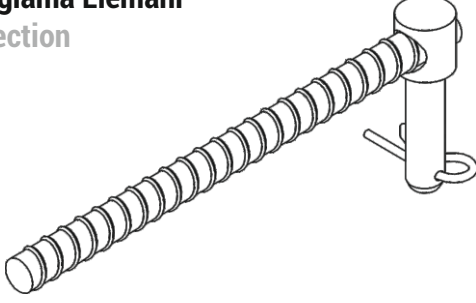
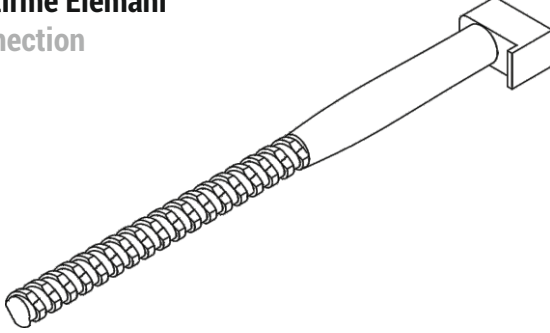
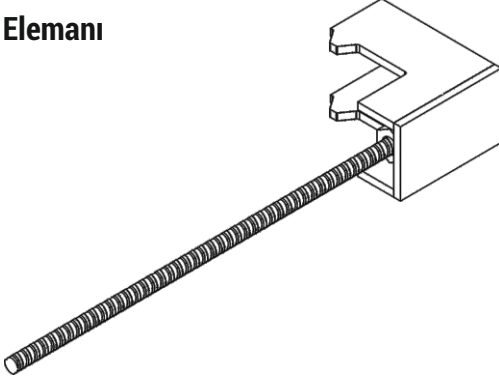
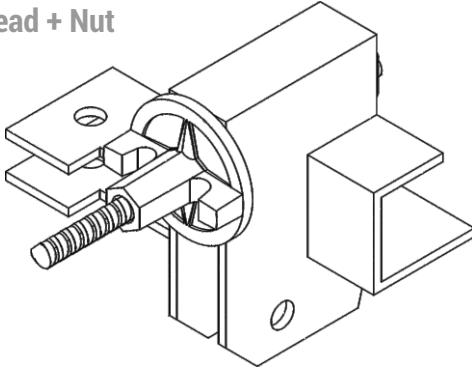
Rapido-Uni Panel
Rapido-Uni Panel

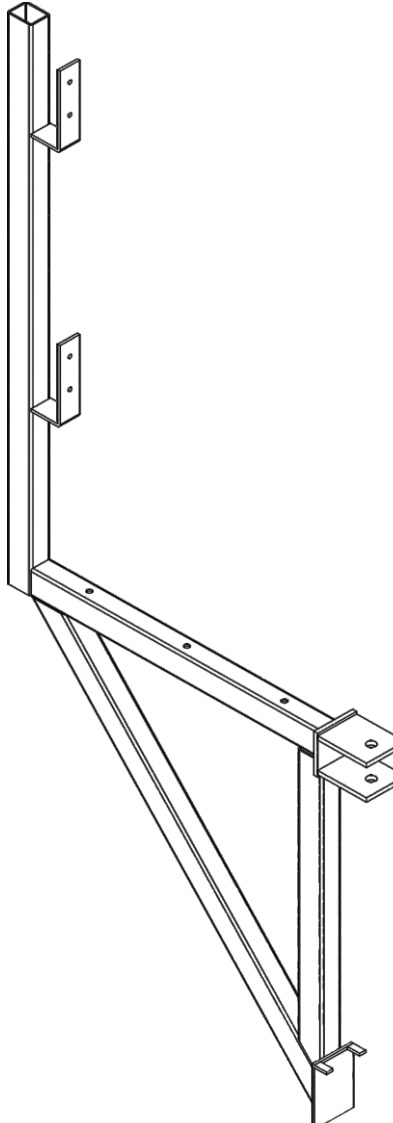
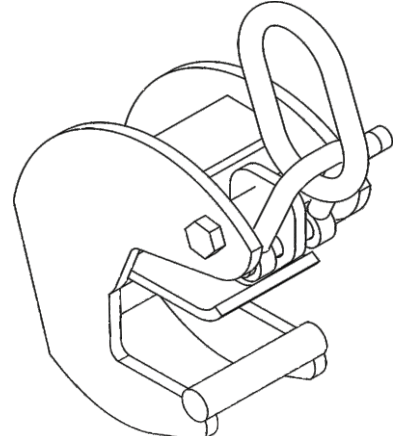
RAPIDO

PANEL FORMWORK

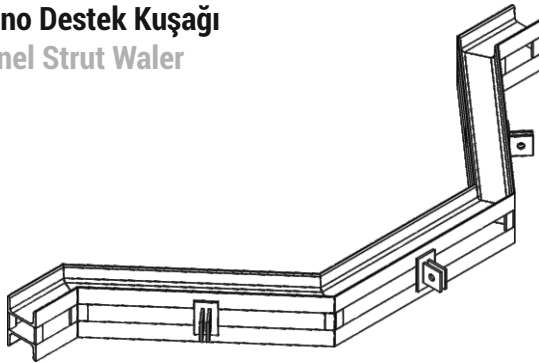
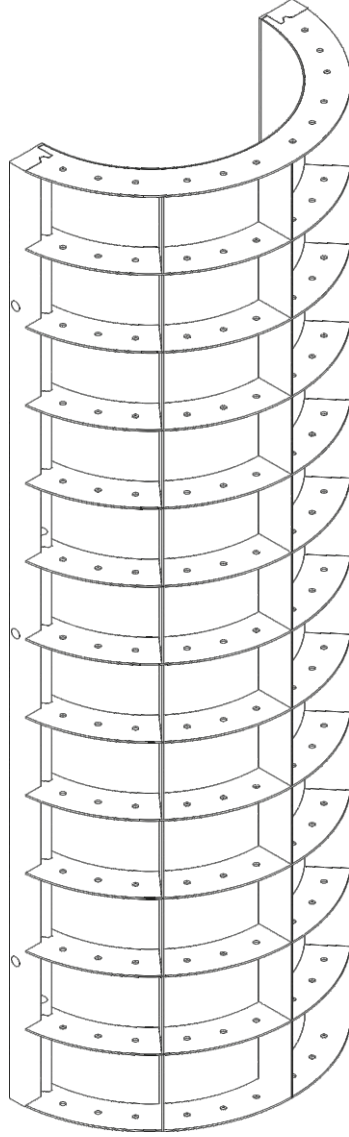
	AĞIRLIK KG WEIGHT KG	UZUNLUĞU LENGHT	ÜRÜN KODU CODE
Rapido Panel İK Rapido Panel IC	33,40	30*30*060	201001
	79,10	30*30*150	201004
	140,05	30*30*270	201008
	155,30	30*30*300	201009
	170,50	30*30*330	201010
	44,90	40*40*060	201101
	104,50	40*40*150	201104
	184,05	40*40*270	201108
	203,95	40*40*300	201109
	223,80	40*40*330	201110
	58,30	50*50*060	201201
	133,80	50*50*150	201204
	234,45	50*50*270	201208
	259,60	50*50*300	201209
	284,80	50*50*330	201210
Rapido Panel DK Rapido Panel EC	6,00	060	201301
	15,00	150	201304
	27,00	270	201308
	30,00	300	201309
	33,00	330	201310

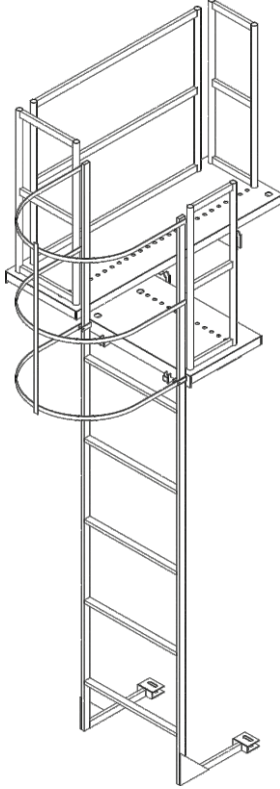
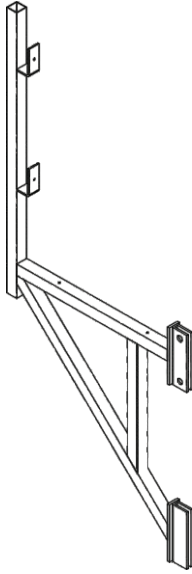
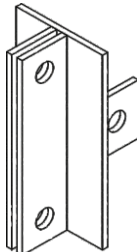
AĞIRLIK KG WEIGHT KG	UZUNLUĞU LENGHT	ÜRÜN KODU CODE	
3,00		201401	Rapido Kilit - Standart Rapido Lock - Standard 
8,00		201402	Rapido Kilit - Ayarlanabilir Rapido Lock - Adjustable 
16,50 22,00 33,00	075 100 150	201501 201502 201503	Rapido Destek Kuşığı 100 Rapido Steel Waler 100 

	AĞIRLIK KG WEIGHT KG	UZUNLUĞU LENGHT	ÜRÜN KODU CODE
Rapido Destek Kuşığı Bağlama Elemanı Rapido Steel Waler Connection 	2,00		201601
Rapido Köşe Birleştirme Elemanı Rapido Corner Connection 	0,60		201701
Rapido Alın Bağlama Elemanı Rapido Stopped 	2,50		210801
Rapido Payanda Kafası + Somun Rapido Push Pull Prop Head + Nut 	5,00		202201

AĞIRLIK KG WEIGHT KG	UZUNLUĞU LENGHT	ÜRÜN KODU CODE	
10,00		202101	 <p>Rapido Çalışma Konsolu Rapido Bracket</p>
7,50		202201	 <p>Rapido Vinç Kulbu Rapido Lifting Bracket</p>

	AĞIRLIK KG WEIGHT KG	UZUNLUĞU LENGHT	ÜRÜN KODU CODE
Dairesel Pano 300 Circular Panel 300	174,4 194,0 213,6 262,0 281,6 301,2 320,8 340,4	Ø50*300 Ø60*300 Ø70*300 Ø80*300 Ø90*300 Ø100*300 Ø110*300 Ø120*300	202600
Dairesel Pano Destek Kuşağı Circular Panel Strut Waler			202700



AĞIRLIK KG WEIGHT KG	UZUNLUĞU LENGHT	ÜRÜN KODU CODE	
		202800	 <p>Rapido Çalışma Platformu Rapido Working Platform</p>
10,00		202900	 <p>Sac Pano Çalışma Konsolu Steel Panel Scaffold Bracket</p>
1,90		203000	 <p>Sac Pano Payanda Kafası Steel Panel Push Prop Head</p>

“The Future
is Ours”



FORMWORK and SCAFFOLDING

Your solution partner since 96

HEADQUARTERS - DİLOVASI

Address : Dilovası Mermerciler Sanayi Sitesi 3. Cd. No:40 Köseler Köyü
Dilovası / KOCAELİ / TÜRKİYE

Phone : +90 262 742 06 37
Fax : +90 262 742 08 37
Web : ozleriskele.com
E-mail : info@ozleriskele.com - fabrika@ozleriskele.com

EGE BRANCH

Address : Kavaklıdere Mah. Ankara Cd. No:405/1
Bornova / İZMİR

Phone : +90 232 479 01 37
Responsible Person : Erdi AYHAN
E-mail : erdi.ayhan@ozleriskele.com