



Your solution partner since 96

RAPID

PANEL FORMWORK

RAPID

PANEL KALIP SİSTEMİ

Rapid el ile taşınan, çelik çerçeveli, plywood yüzeyli panel kalıp sistemidir. Sistemin ana çerçevesinde Welser profil tarafından dizayn edilmiş burulmaya karşı mukavemet değeri yüksek özel şekillendirilmiş S420 MC çelik profil kullanılmaktadır. Panel yüzeylerinde 15 mm birch plywood kullanılmaktadır. Panel genişlikleri, 30-45-60-75-90 ve yükseklikleri ise, 60-90-120-150-180-210-240-270-300 cm olarak üretilmektedir. Rapid-uni panellerde kullanılan 5 cm de bir delinmiş perfore profiller sayesinde her ebat perde ve kolon kalıbı kolayca ayarlanıp dökülebilir. Rapid kalıp sistemi maksimum 60 kN/m² taze beton basıncına göre dizayn edilmiştir. Üretimlerimizde robotik kesme, delme ve kaynak prosesleri uygulanmaktadır. Paneller fırın boya işlemine tabi tutulmadan önce kumlama yapılarak yüzeyindeki kimyasal yağlardan arındırılır. Ayrıca talep halinde ürünlerimiz TS 914 EN ISO 1461 standartlarına göre daldırma galvaniz kaplanabilir.



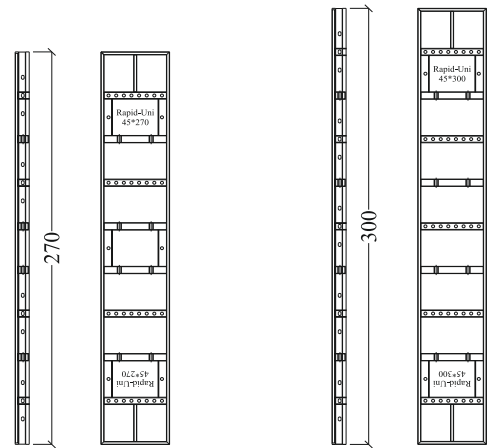
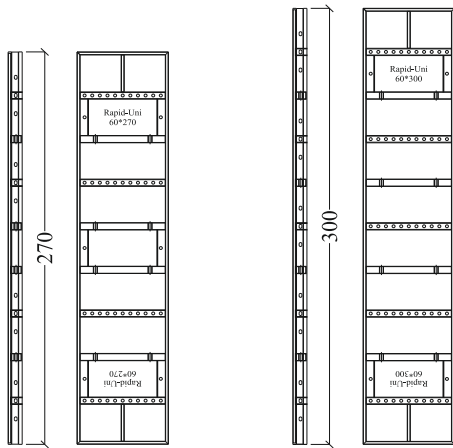
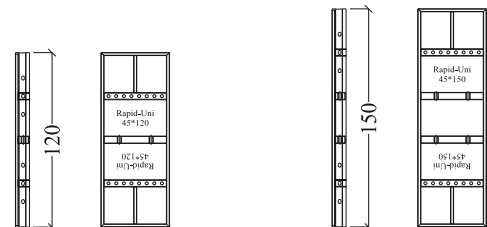
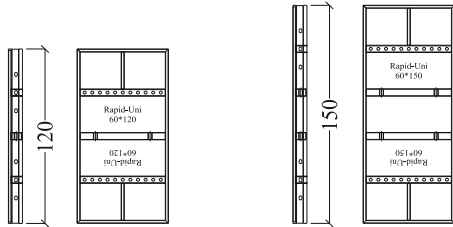
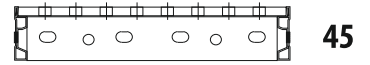
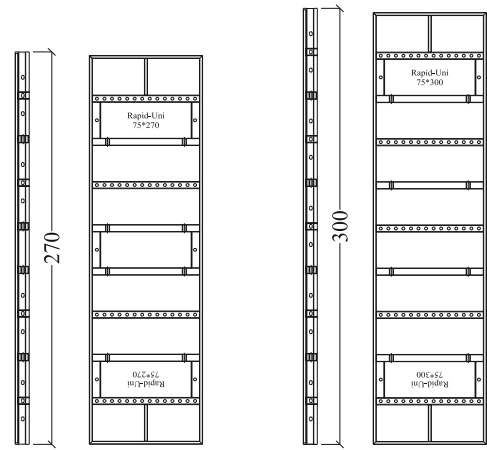
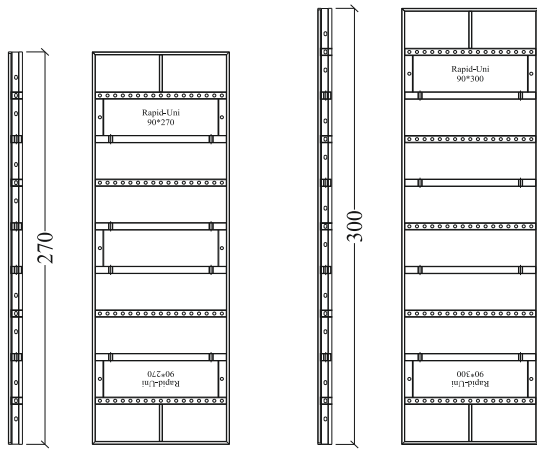
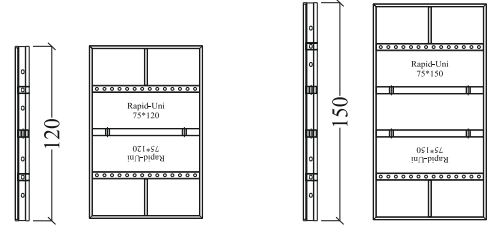
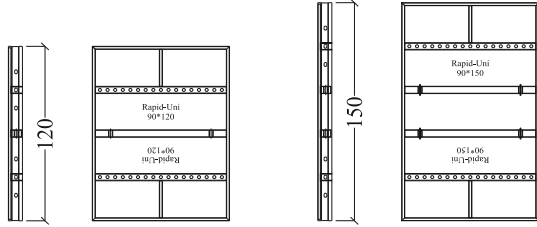
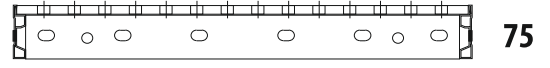
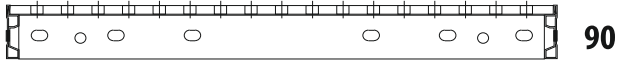
RAPID

PANEL FORMWORK SYSTEM

RAPID is a steel frame, plywood surfaced panel formwork system carried by hand. In the main frame of the system, specially shaped S420 MC steel profile with high buckling resistance value designed by Welser profile is used. 15 mm birch plywood is used for panel surfaces. Panel widths are 30-45-60-75-90 and heights are produced as 60-90-120-150-180-210-240-270-300 cm. With 5 cm perforated profiles used in RAPID-UNI panels, wall and column formwork of any size can be easily adjusted and casted. RAPID formwork system is designed in accordance with maximum 60 kN/m² concrete pressure. Robotic cutting, drilling and welding processes are applied in our production. The steel products are cleaned with sandblasting before oven painting because of the industrial chemical oil. Upon request, our products can be hot dip galvanized according to TS 914 EN ISO 1461 standards.



Rapid Uni-Panel Ölçüleri / Rapid Universal Panel Dimensions

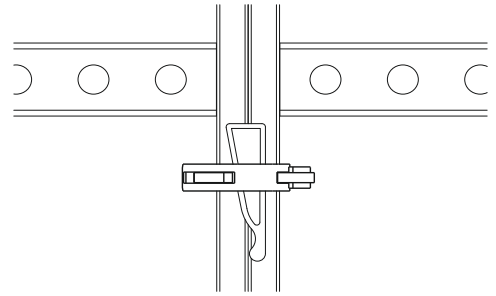
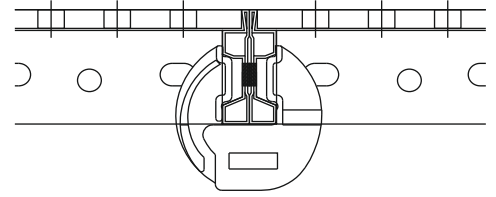
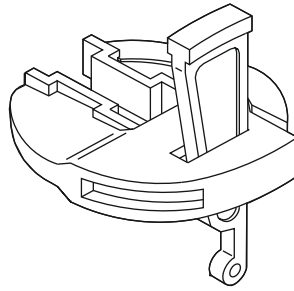


Rapid Standard Kilit / Rapid Lock - Standart



Rapid profilinin geometrisine uygun üretilen Rapid Kilit-Standart ile panellerin rijit bir şekilde birbirine bağlantısı sağlanır ve aynı zamanda panellerin hizaya getirilmesi sağlanır.

Rapid Lock-Standart has to produce as a appropriate Rapid pofile geometrics. It provides connection in a rigit way between panels. With this way all the panels can be aligned.

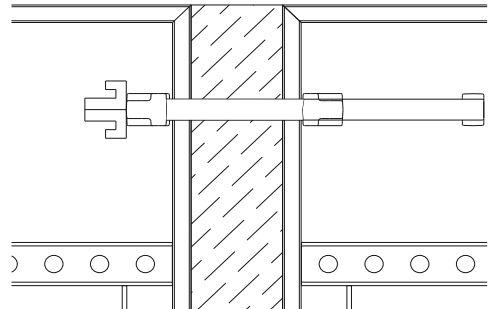
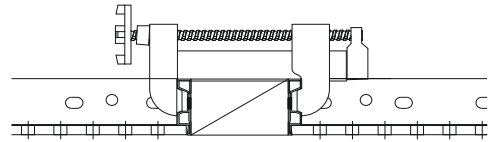
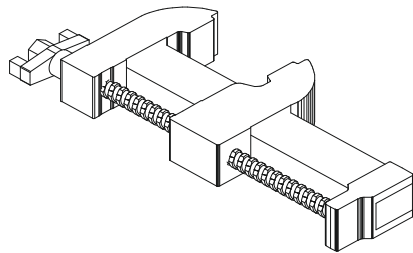


Rapid Ayarlanabilir Kilit / Rapid Adjustable Lock



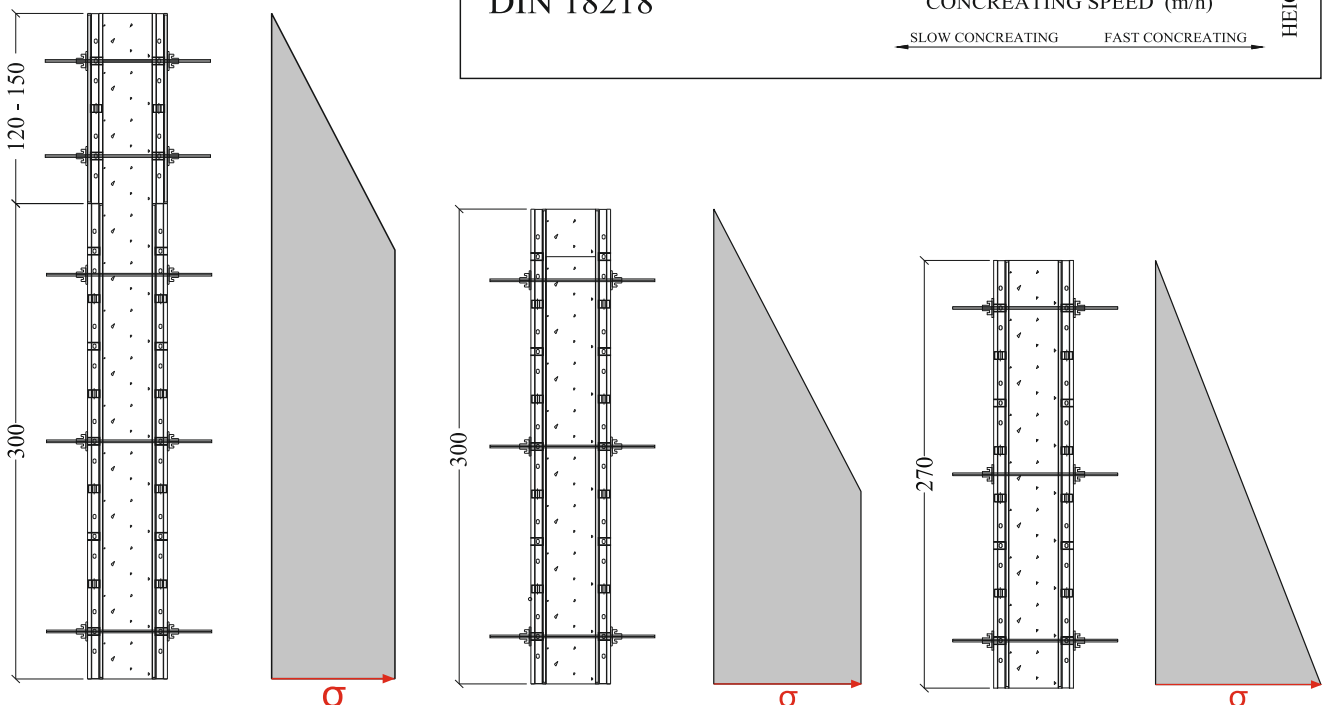
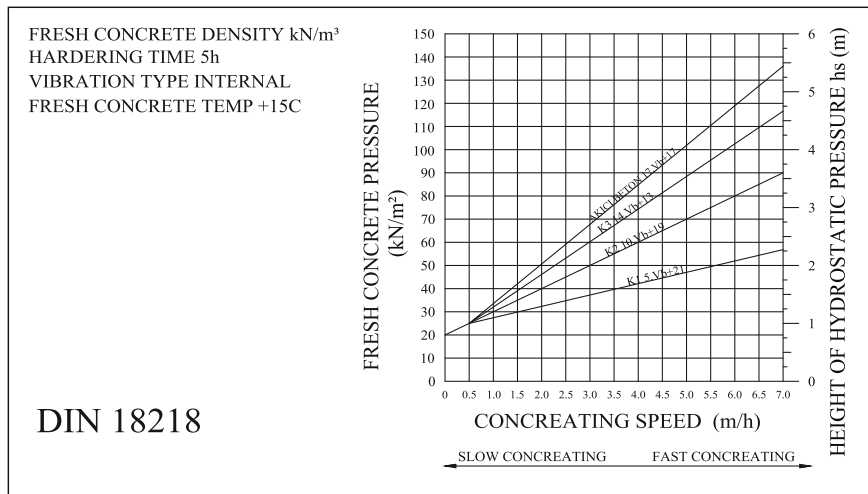
Rapid ayarlanabilir kilit ile geçilebilecek maksimum dolgu ölçüsü 15 cm dir.

Rapid adjustable lock system can achive maximum 15 cm CASTING measure.



Rapid Panel Taze Beton Basıncı / Rapid Panel fresh-concrete pressure

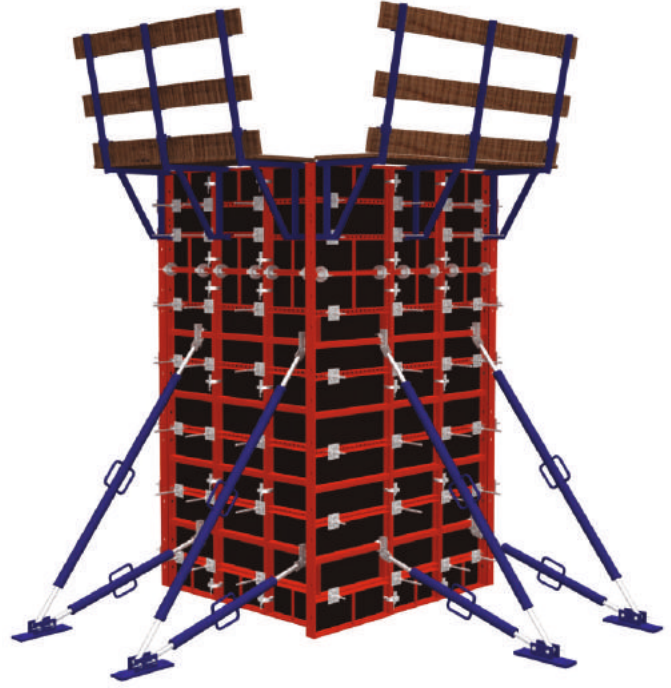
Panel Type	40 kN/m ²	50 kN/m ²	60 kN/m ²	70 kN/m ²
Rapid 030	✓	✓	✓	✓
Rapid 045	✓	✓	✓	✓
Rapid 060	✓	✓	✓	
Rapid 075	✓	✓		
Rapid 090	✓			



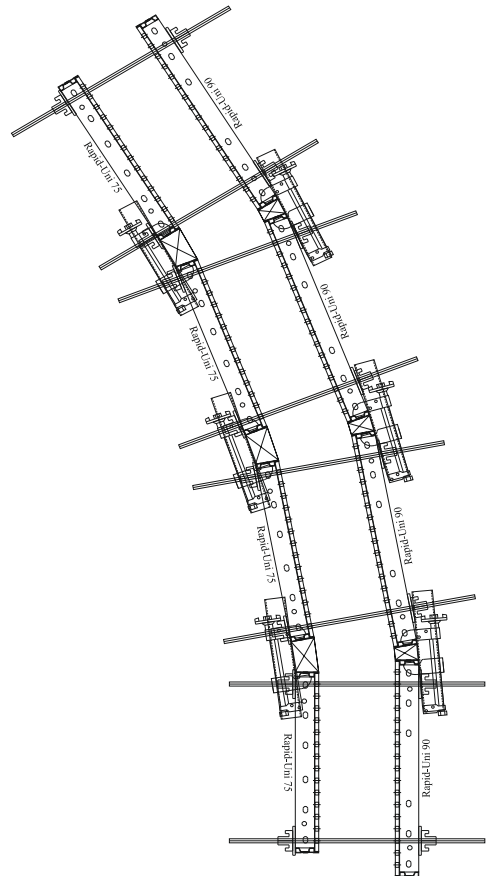
Rapid Kolon Kalıbı / Rapid Column Formwork



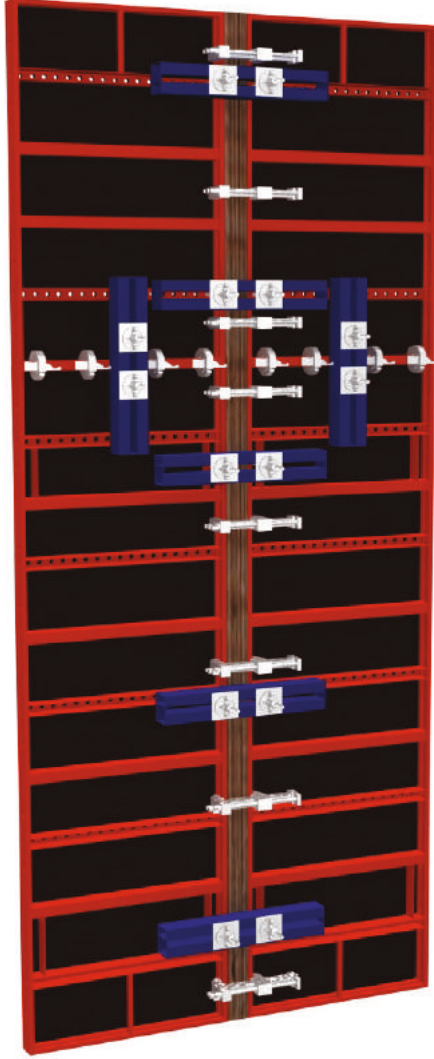
Rapid Perde Kalıbı / Rapid Wall Formwork



Rapid Dairesel Kalıp / Rapid Circular Formwork

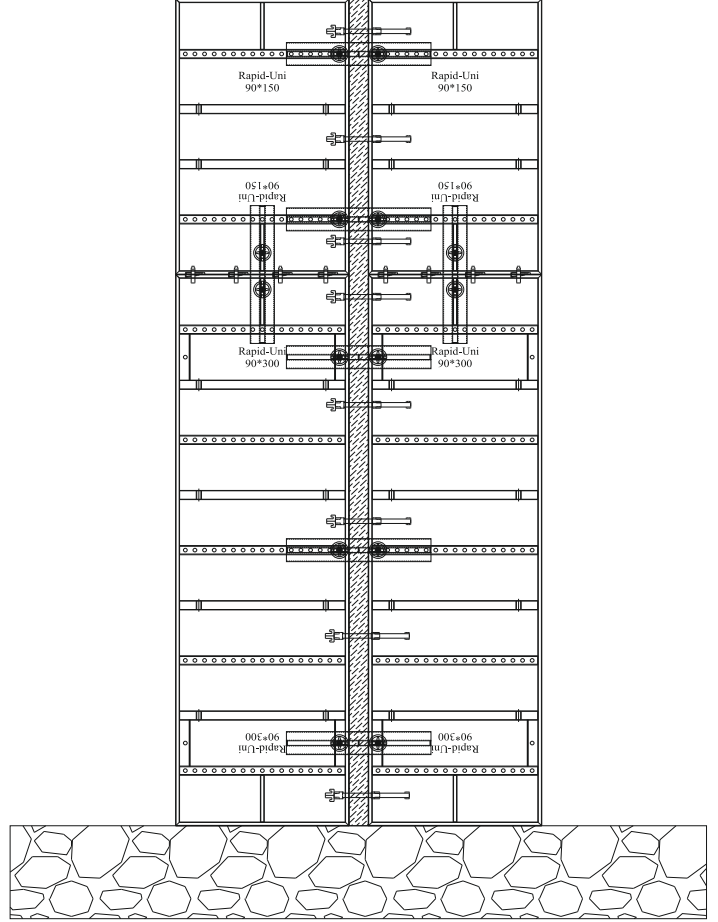


Rapid Destek Kuşağı / Rapid Support Waler

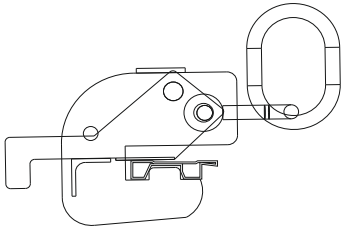


İki panel arasında dolgu yapıldığında Rapid destek kuşağı bağlanarak panellerin aynı hizaya gelmesi sağlanır.

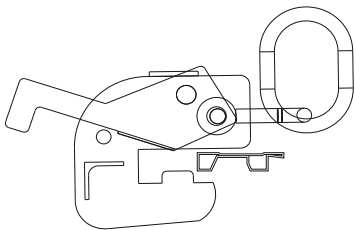
Casting between two panels by using Rapid support waler, align all the panels on the same line.



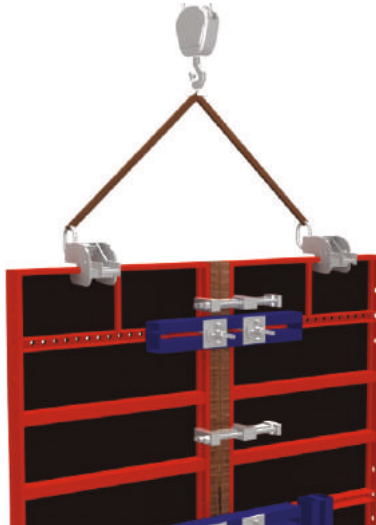
Rapid Vinç Kulbu Bağlantı Detayları / Connection details of Rapid lifting bracket



Aşama 1 / Step 1

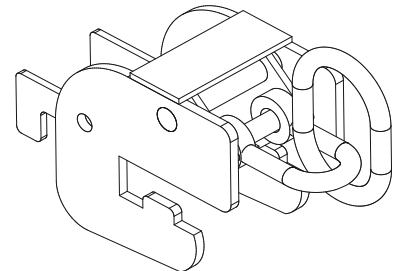


Aşama 2 / Step 2

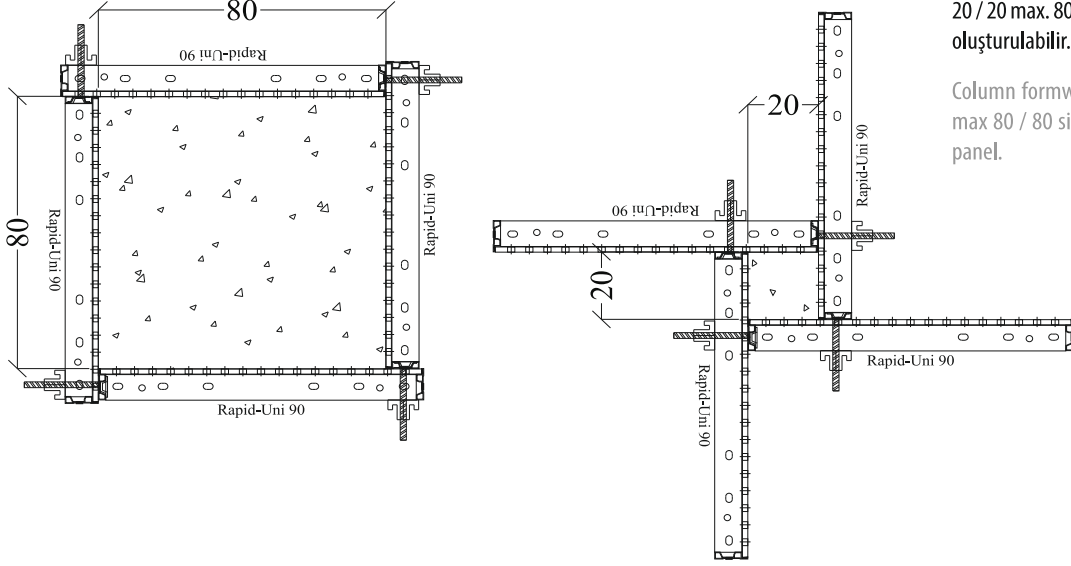


Rapid Vinç Kulbu özel tasarımı sayesinde panellerin yatay ve dikey kayıtlarından rijit bir şekilde tutularak kalıbın deplase edilmesini sağlar.

Rapid lifting bracket can be moved by holding panel's horizontal and vertical equipments as a rigid way due to it's specially design.



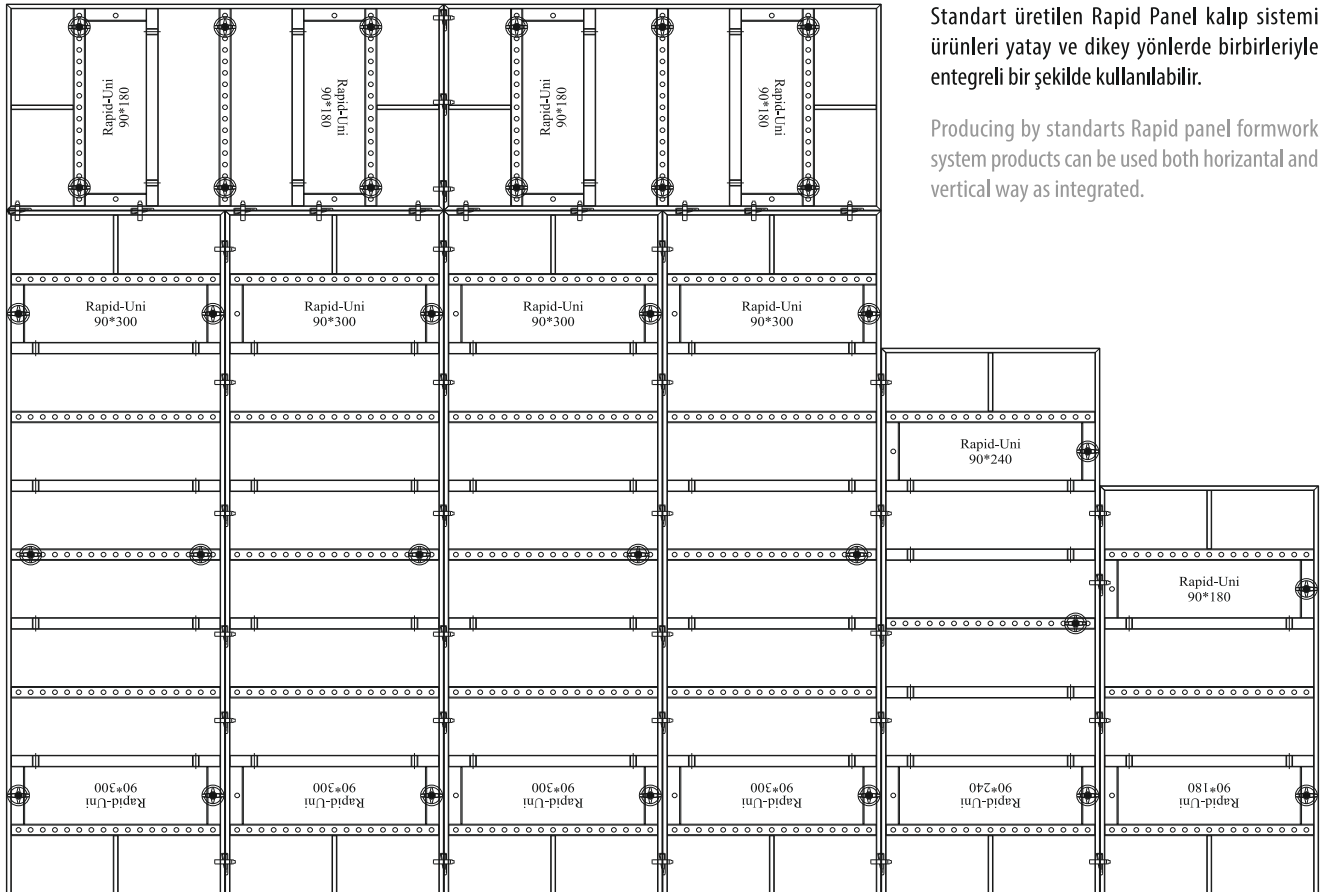
Rapid Kolon Kalıbı / Rapid Column Formwork



Rapid-Uni 90 cm genişliğindeki pano ile min. 20 / 20 max. 80 / 80 ebatlarında kolon kalıpları oluşturulabilir.

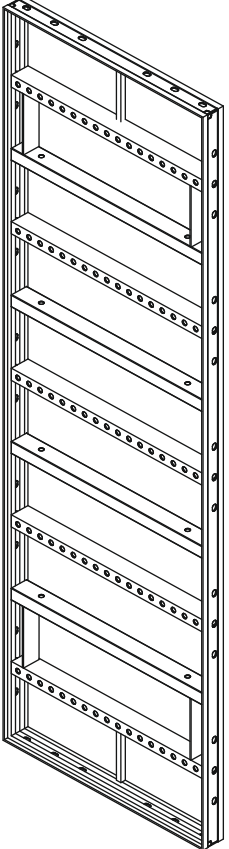
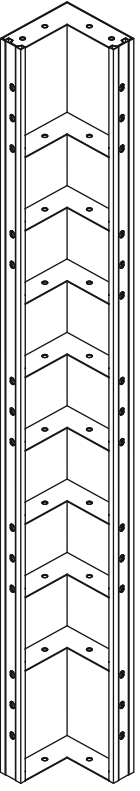
Column formworks can be made min 20/20 max 80 / 80 sizes by using Rapid-Uni 90 cm panel.

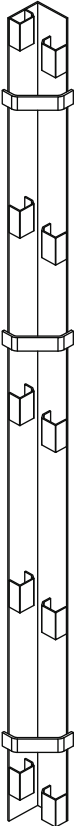
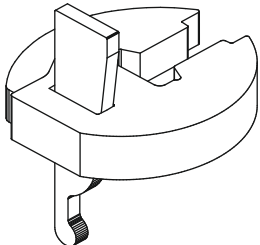
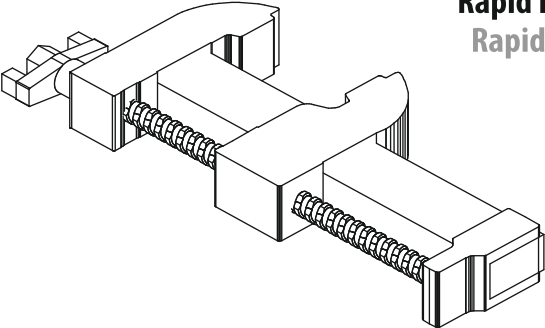
Rapid Panel Montaj Şekilleri / The assembly types of Rapid Panel

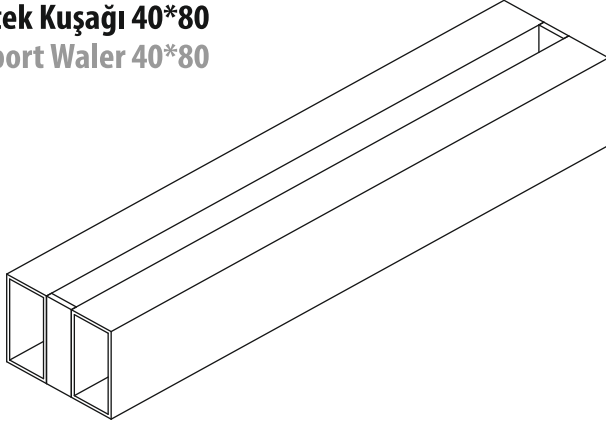
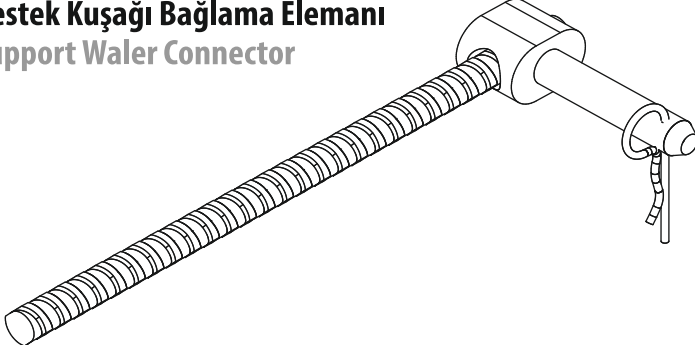
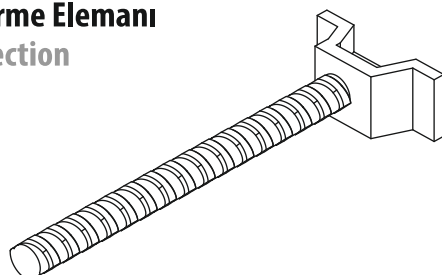
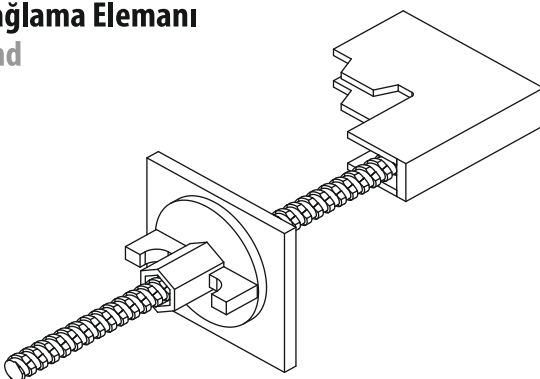


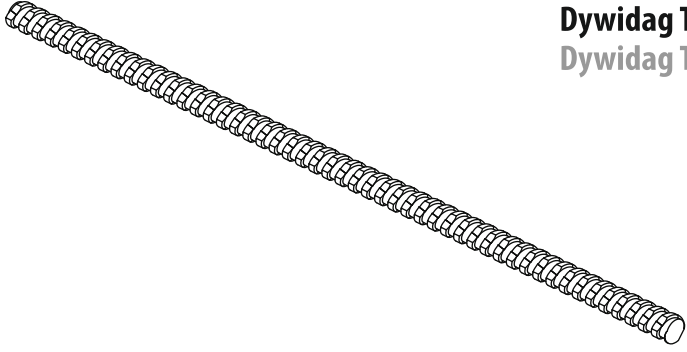
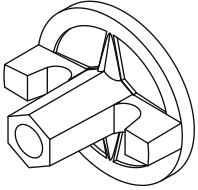
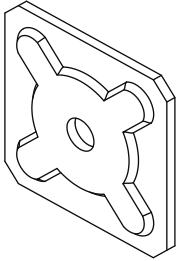
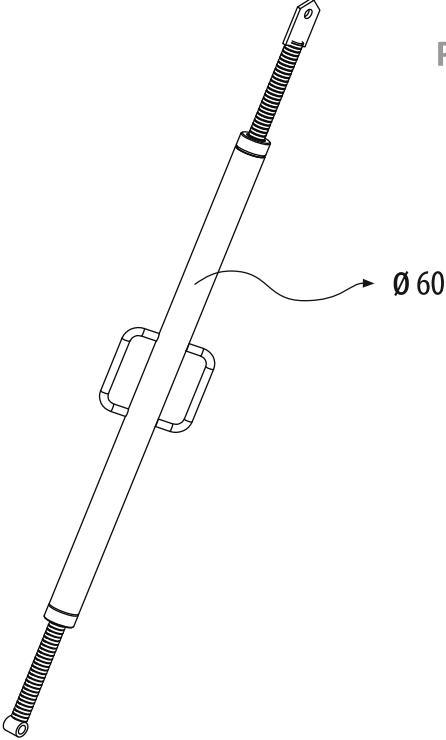
Standart üretilen Rapid Panel kalıp sistemi ürünleri yatay ve dikey yönlerde birbirleriyle entegreli bir şekilde kullanılabilir.

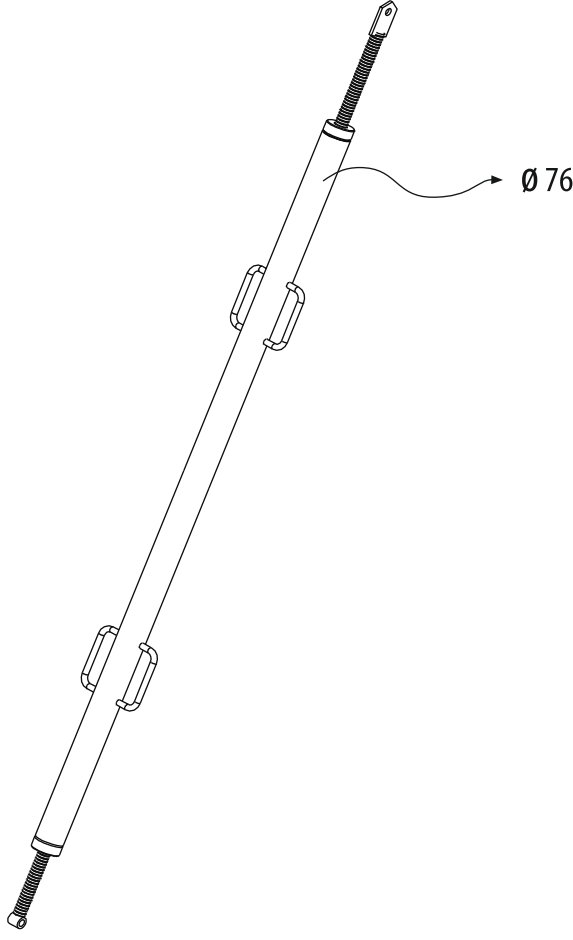
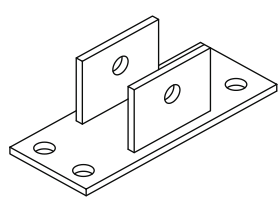
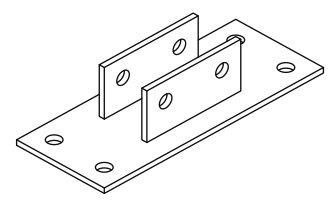
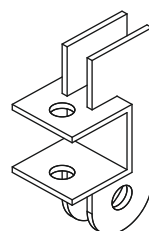
Producing by standarts Rapid panel formwork system products can be used both horizontal and vertical way as integrated.

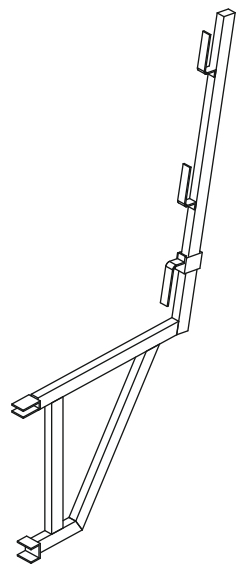
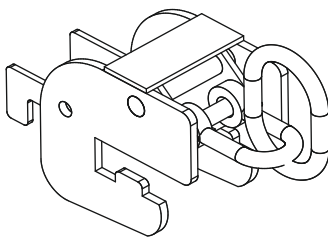
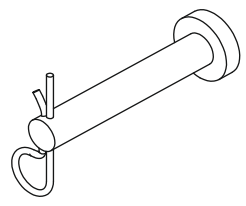
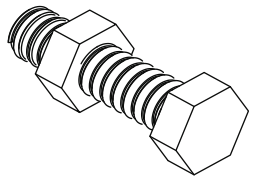
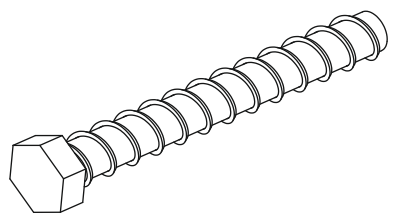
		AĞIRLIK KG WEIGHT KG	UZUNLUĞU LENGTH	ÜRÜN KODU CODE
Rapid Uni-Panel Rapid Uni-Panel		6,70	030*060	230101
		16,70	030*150	230104
		30,00	030*270	230108
		33,30	030*300	230109
		36,70	030*330	230110
		10,00	045*060	230201
		25,00	045*150	230204
		45,00	045*270	230208
		50,00	045*300	230209
		55,00	045*330	230210
		130,40	060*060	230301
		33,30	060*150	230304
		60,00	060*270	230308
		66,60	060*300	230309
		73,30	060*330	230310
		16,70	075*060	230401
		41,70	075*150	230404
		75,00	075*270	230408
		83,30	075*300	230409
		91,60	075*330	230410
20,00	090*060	230501		
50,00	090*150	230504		
90,00	090*270	230508		
99,90	090*300	230509		
109,90	090*330	230510		
Rapid Panel İK Rapid Panel IC		15,40	020*020*060	230601
		36,00	020*020*150	230604
		63,60	020*020*270	230608
		70,40	020*020*300	230609
		77,30	020*020*330	230610
		18,00	025*025*060	230701
		42,00	025*025*150	230704
		74,00	025*025*270	230708
		82,00	025*025*300	230709
		90,00	025*025*330	230710
		20,70	030*030*060	230801
		48,00	030*030*150	230804
		57,20	030*030*270	230805
		93,60	030*030*300	230809
		102,80	030*030*330	230810

AĞIRLIK KG WEIGHT KG	UZUNLUĞU LENGTH	ÜRÜN KODU CODE	
3,90 9,70 17,50 19,50 21,40	060 150 270 300 330	230901 230904 230908 230909 230910	 <p>Rapid Panel DK Rapid Panel EC</p>
3,00		231001	 <p>Rapid Kilit-Standart Rapid Lock - Standard</p>
8,00		231002	 <p>Rapid Kilit-Ayarlanabilir Rapid Lock - Adjustable</p>

	AĞIRLIK KG WEIGHT KG	UZUNLUĞU LENGTH	ÜRÜN KODU CODE
Rapid Destek Kuşağı 40*80 Rapid Support Waler 40*80 	6,00 9,00 12,00 18,00	50 75 100 150	231101 231102 231103 231104
Rapid Destek Kuşağı Bağlama Elemanı Rapid Support Waler Connector 	2,00		231201
Rapid Köşe Birleştirme Elemanı Rapid Corner Connection 	0,60		231301
Rapid Alın Bağlama Elemanı Rapid Stopend 	2,50		231401

AĞIRLIK KG WEIGHT KG	UZUNLUĞU LENGTH	ÜRÜN KODU CODE	
0,75 1,50 1,80 2,25 3,00	17*500 17*1000 17*1200 17*1500 17*2000	101700 101701 101702 101703 101704	 <p>Dywidag Tie-Rod Ø15 Dywidag Tie-Rod Ø15</p>
1,00		101710	 <p>Tie-Rod Somunu Ø90 Tie-Rod Nut Ø90</p>
1,00	120*120	101711	 <p>Tie-Rod Aynası 8 mm Tie-Rod Plate 8 mm</p>
10,25 12,50 14,50 16,50	050 100 150 200	101801 101802 101804 101806	 <p>Payanda 60 Push Pull Props 60</p> <p>Ø 60</p>

	AĞIRLIK KG WEIGHT KG	UZUNLUĞU LENGTH	ÜRÜN KODU CODE
Payanda 76 Push Pull Props 76 	40,15 48,90	300 400	101901 101902
Payanda Tabanı Tekli Base Plate Single 	2,00		102101
Payanda Tabanı Çiftli Base Plate Double 	3,00		102102
Rapid Payanda Kafası Rapid Push Pull Prop Head 	5,00		231501

AĞIRLIK KG WEIGHT KG	UZUNLUĞU LENGTH	ÜRÜN KODU CODE	
10,00		231601	 <p>Rapid Çalışma Konsolu Rapid Bracket</p>
7,50		231701	 <p>Rapid Vinç Kulbu Rapid Lifting Bracket</p>
0,10	16*80	300601	 <p>Pim ve Kopilya Rapid Lock - Adjustable</p>
0,10	16*60	300701	 <p>Cıvata ve Somun Pin And Split Pin</p>
0,10 0,15	12*80 14*110	300801 300802	 <p>Multi - Monti Multi - Monti</p>

*“The Future
is Ours”*



FORMWORK and SCAFFOLDING

Your solution partner since 96

HEADQUARTERS - DİLOVASI

Address : Dilovası Mermerciler Sanayi Sitesi 3. Cd. No:40 Köseler Köyü
Dilovası / KOCAELİ / TÜRKİYE

Phone : +90 262 742 06 37
Fax : +90 262 742 08 37
Web : ozleriskele.com
E-mail : info@ozleriskele.com - fabrika@ozleriskele.com

EGE BRANCH

Address : Kavaklıdere Mah. Ankara Cd. No:405/1
Bornova / İZMİR

Phone : +90 232 479 01 37
Responsible Person : Erdi AYHAN
E-mail : erdi.ayhan@ozleriskele.com